



# **Permission Manager**

---

## **Installation Guide**

## **Copyright**

Copyright ©2023 BoostSolutions Co., Ltd. All rights reserved.

All materials contained in this publication are protected by Copyright Law and no part of this publication may be reproduced, modified, displayed, stored in a retrieval system, or transmitted in any form or by any means, electronic, mechanical, photocopying, recording or otherwise, without the prior written consent of BoostSolutions.

Our web site: <https://www.boostsolutions.com>

## Contents

1.	Overview .....	1
2.	System Requirements .....	2
2.1	Operation System .....	2
2.2	SQL Server .....	2
2.3	SharePoint Versions .....	2
2.4	Browser Clients .....	2
2.5	Softwares .....	3
2.6	Service Account Requirements .....	3
3.	Installation Instructions .....	4
3.1	Download Permission Manager .....	4
3.2	Install Prerequisites .....	4
3.3	Install Permission Core .....	5
3.4	Install Column/View Permission .....	13
3.5	Install Column View Permission for Web Service .....	15
4.	Access Permission Manager .....	19
5.	Repair Instructions .....	20
5.1	Repair Prerequisites .....	20
5.2	Repair Permission Core .....	20
5.3	Repair Column/View Permission .....	22
5.4	Repair Column/View Permission for Web Service .....	22
6.	Upgrade .....	24
6.1	Upgrade Prerequisites .....	24
6.2	Upgrade Permission Core .....	24
7.	Uninstallation Instructions .....	28
7.1	Uninstall Prerequisites .....	28
7.2	Uninstall Permission Core .....	28
7.3	Uninstall Column/View Permission .....	30
7.4	Uninstall Column/View Permission for Web Service .....	30
8.	Support .....	32

8.1	Troubleshooting FAQ.....	32
8.2	Contact Info .....	32

## **1. Overview**

Permission Manager can help administrators manage SharePoint users, groups and permissions on the central platform.

This guide is intended to walk you through the process of installing Permission Manager on your SharePoint server farm.

## **2. System Requirements**

### **2.1 Operation System**

- Windows Server 2008 (x86 and x64)
- Windows Server 2008 R2 (x86 and x64)
- Microsoft Windows Server 2012 Standard or Datacenter X64
- Microsoft Windows Server 2016
- Microsoft Windows Server 2019
- Microsoft Windows Server 2022

### **2.2 SQL Server**

- SQL Server 2008 (x86 and x64)
- SQL Server 2008 R2 (x86 and x64)
- SQL Server 2012
- SQL Server 2014
- SQL Server 2016
- SQL Server 2019

### **2.3 SharePoint Versions**

Permission Manager can run on the following versions of Microsoft SharePoint:

- Microsoft SharePoint Server 2013
- Microsoft SharePoint Foundation 2013
- Microsoft SharePoint Server 2016
- Microsoft SharePoint Server 2019
- Microsoft SharePoint Server Subscription Edition

### **2.4 Browser Clients**

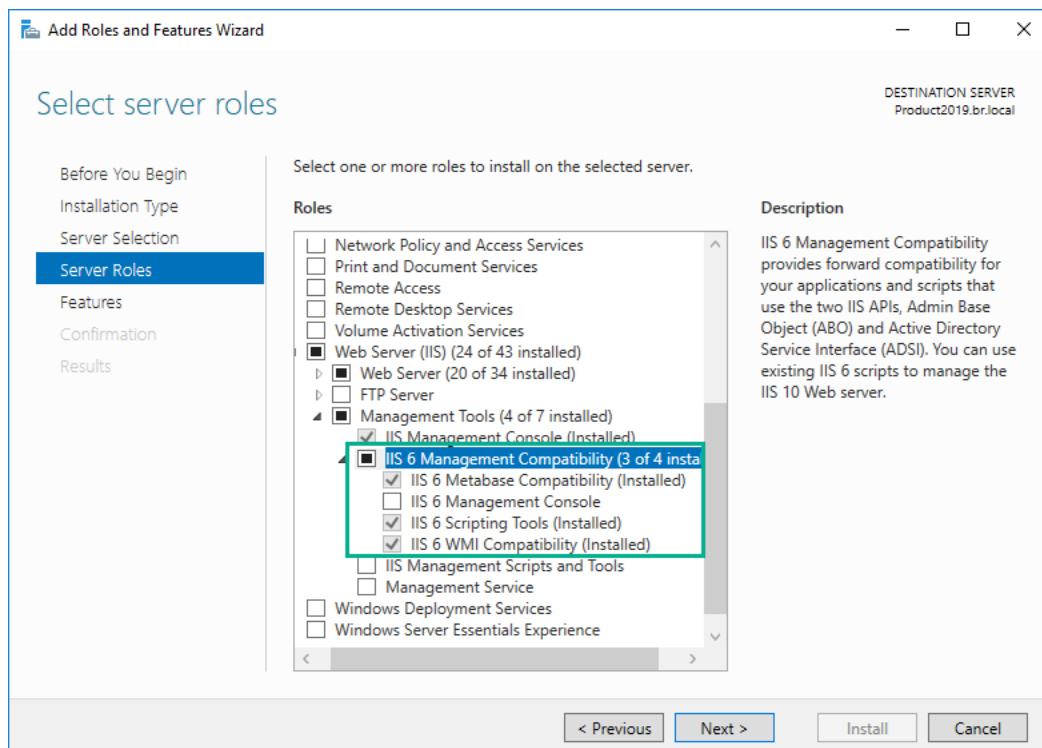
Permission Manager can run on following browsers:

- Microsoft Edge
- Chrome
- Firefox

## 2.5 Softwares

- .Net Framework 3.5
- .Net Framework 4.6

For SharePoint Server Subscription Edition, it requires IIS 6 Management Compatibility roles installed.



## 2.6 Service Account Requirements

When you install SharePoint BoostSolutions Permission Manager, the account that you use must have specific permissions and rights. If the account that you use does not have the required permissions, the installation will fail.

The account that you use when you install must have the following permissions:

- Member of the **Administrators** group in domain.
- Member of the **Domain Admins** group.
- Member of the **Farm Administrators** group.

## 3. Installation Instructions

### 3.1 Download Permission Manager

Please skip this step if you already download the product or have been provided with a copy of Permission Manager.

1. Access the product site at <https://www.boostsolutions.com/permission-manager.html>
2. Download it to your SharePoint server.

To install the product, the current user must be met [these requirements](#).

---

**Note:** The installation should be run on server which is running following services, Microsoft SharePoint Foundation Web Application and Central Administration.

---

Permission Manager contains four components:

**Prerequisites:** The prerequisites must be installed before the permission core components.

**Permission Core:** This is the component that is required for the Permission Manager to work.

**Column/View Permission:** This is the component that is required for the Permission Manager to manage column and view permission settings.

**Column/View Permission for Web Services:** This component need to installed for managing column and view permissions on the web services.

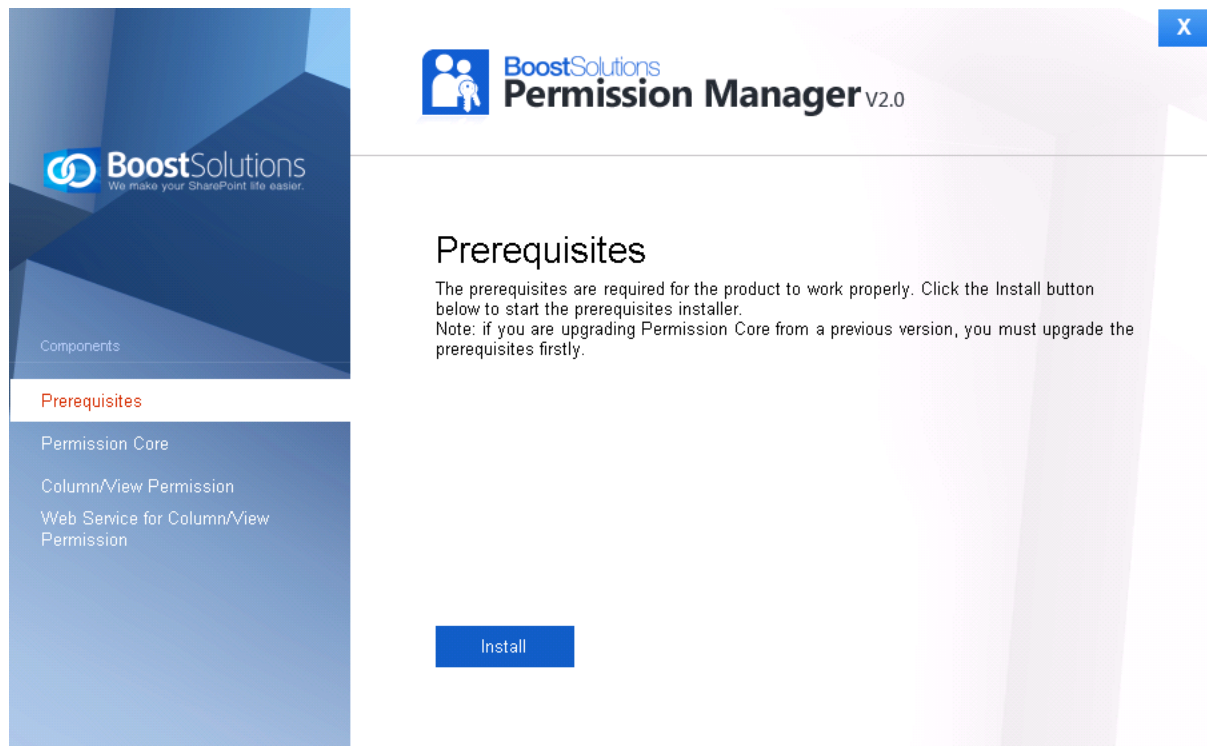
The followings show the steps to install all above four components.

### 3.2 Install Prerequisites

To install Permission Core, the prerequisites must be installed first.

1. Double click Setup.exe file. Select **Prerequisites**, and click Install.





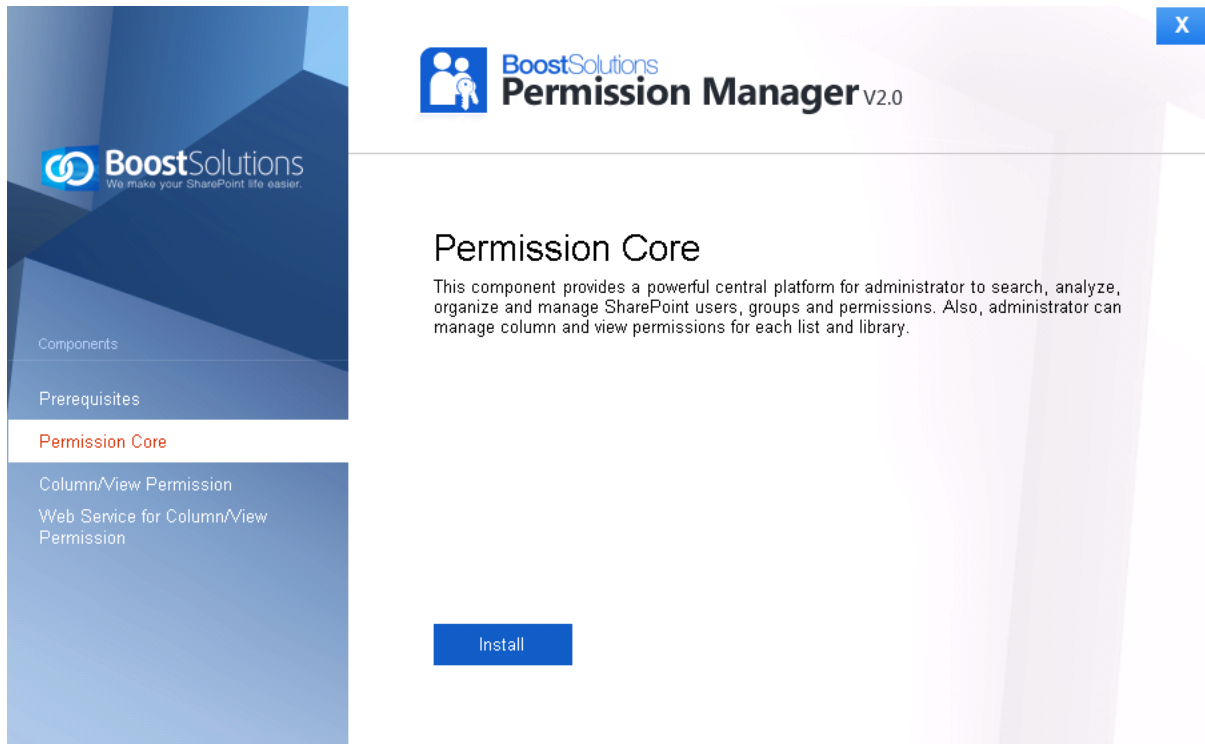
2. When the setup wizard appears, click Next button.
3. A system check is performed to verify if your machine meets all the requirements for installing the product. After the system check is finished, click **Next**.
4. Review and accept the End-User License Agreement and click **Next**.
5. In the Web Application Deployment Targets, select the web applications you are going to install and click **Next**.

**Note** If you select **Automatically activate features**, the product features will be activated in the target site collection during the installation process. If you want to manually activate the product feature later, uncheck this box.

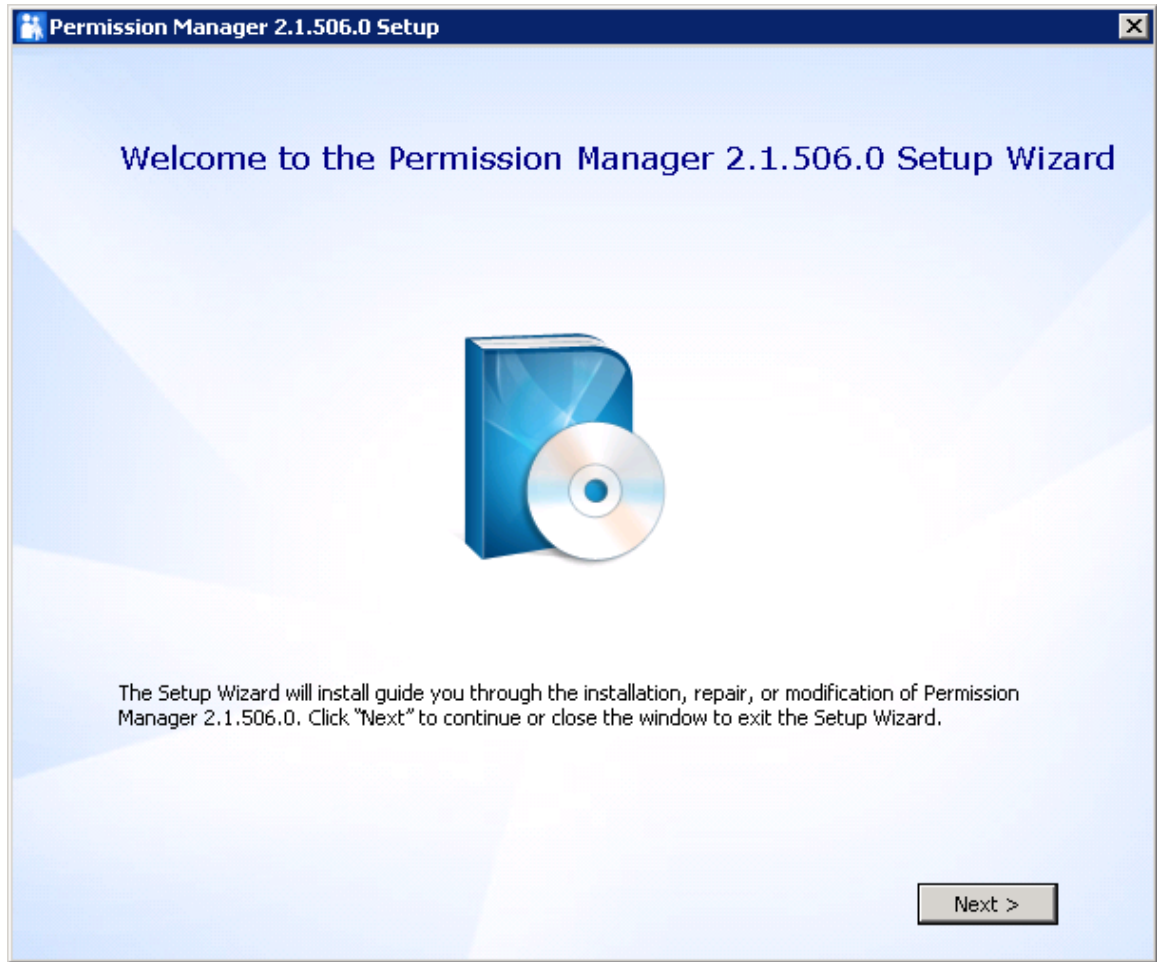
6. Upon completion of the installation, details are displayed showing which web applications you product has been installed to.
7. Click **Close** to finish the installation.

### 3.3 Install Permission Core

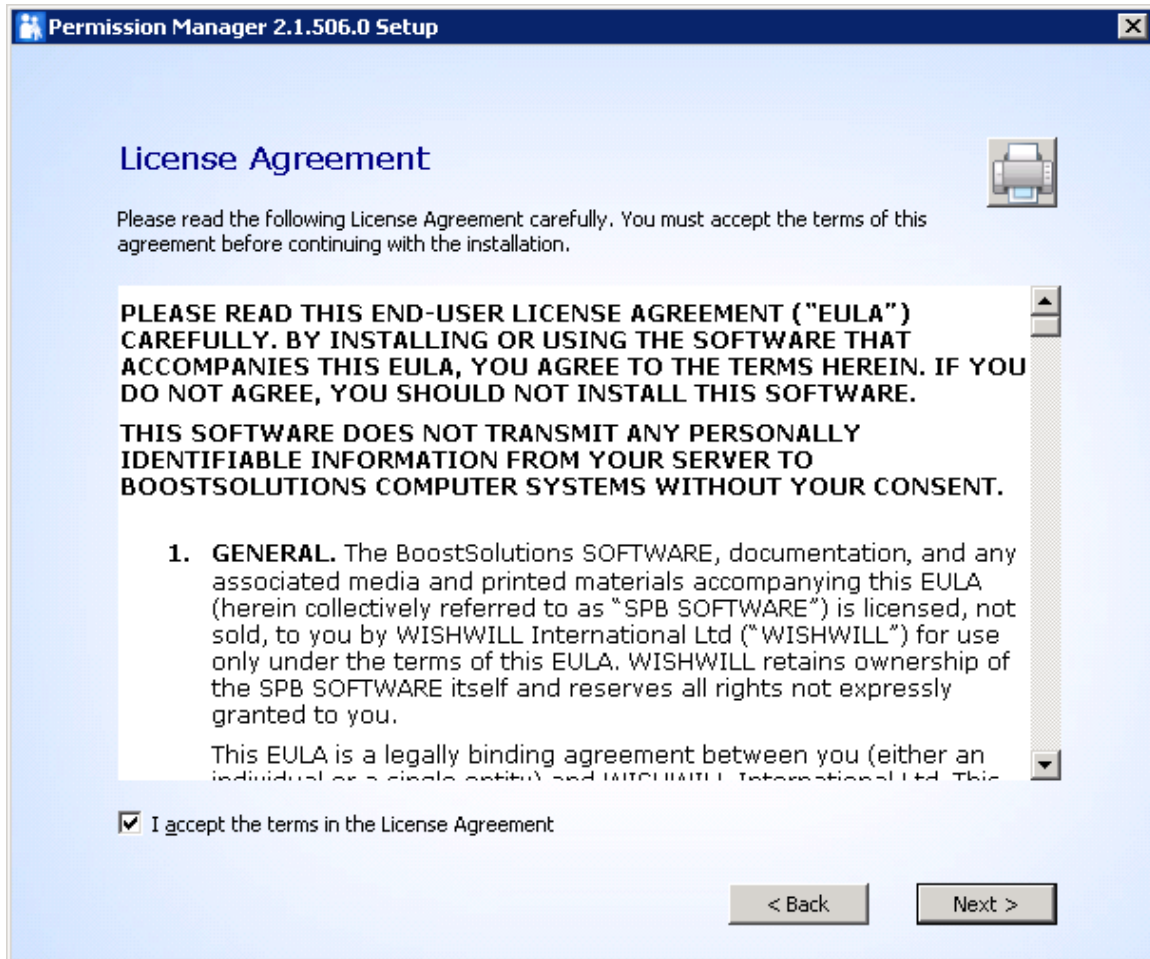
1. After installing the prerequisites, select **Permission Core**, and click **Install**.



2. In the wizard window, click **Next**.



3. Select **I accept the terms in the License Agreement**, and then click **Next**.



4. In Web Application Configuration window, configure the **IIS Web Site Settings** and **Application Pool Settings**.

The screenshot shows the 'Web Application Configuration' window of the Permission Manager 2.1.506.0 Setup. The window has a title bar with the application name and a close button. The main content area is light blue and contains the following elements:

- Web Application Configuration** (Section Header)
- Permission Manager installs as a SharePoint web application. Specify the IIS web site settings and application pool account.
- IIS Web Site Settings** (Section Header)
  - Site Name:
  - Port:
- Application Pool Settings** (Section Header)
  - Domain:
  - User Name:
  - Password:
- NOTE:** This specified account will be used to login the Permission Manager.
- Navigation buttons:  and

In **IIS Web Site Settings** section, type the Site Name and Port.

By default, the port is 8787. If the port exists, type another one. And then Permission Manager will create a new web application based on the port.

In **Application Pool Settings** section, the domain and user name is entered by default, you just need to type password.

Click **Next**.

5. In Database Configuration window, configure the **Database Settings** and **Authentication**.

The screenshot shows the 'Permission Manager 2.1.506.0 Setup' window. The title bar is dark blue with a small icon on the left and a close button on the right. The main area has a light blue background. At the top, the text 'Database Configuration' is displayed in a large, bold, dark blue font. Below this, a smaller line of text reads: 'Provide the name of the database server to hold the SharePoint content database for the Permission Manager web application and the content database name.' There are two main sections: 'Database Settings' and 'Authentication'. The 'Database Settings' section contains three text input fields: 'Server Name:' with the value 'pro-mac', 'Port:' with the value '1433', and 'Data Base Name:' with the value 'BoostSolutionsEnterprise'. The 'Authentication' section contains a checked checkbox for 'Windows Authentication', a 'User Name:' field with the value 'sa', and an empty 'Password:' field. Below these fields is a 'Test Connection' button. At the bottom right of the window are two buttons: '< Back' and 'Next >'. The window has a standard Windows XP-style border.

In **Database Settings** section, type the Sever Name, Port and Database Name.

*Server Name:* Type the database server name.

---

**Note:**

1. For default instance, please type the database server name.
  2. If you connect to non-default instance, please type the name as following: *database server\instance name*.
  3. If the database and SharePoint are hosted on one server, it is recommend to type the server name here for high speed connectivity.
  4. If you have created a SQL server alias on the database server, please type the Server Name as following: *database server name\server alias* or *database server IP\server alias*.
- 

*Port:* By default, the port is 1433. If your SQL Server port is changed, please type the correct one.

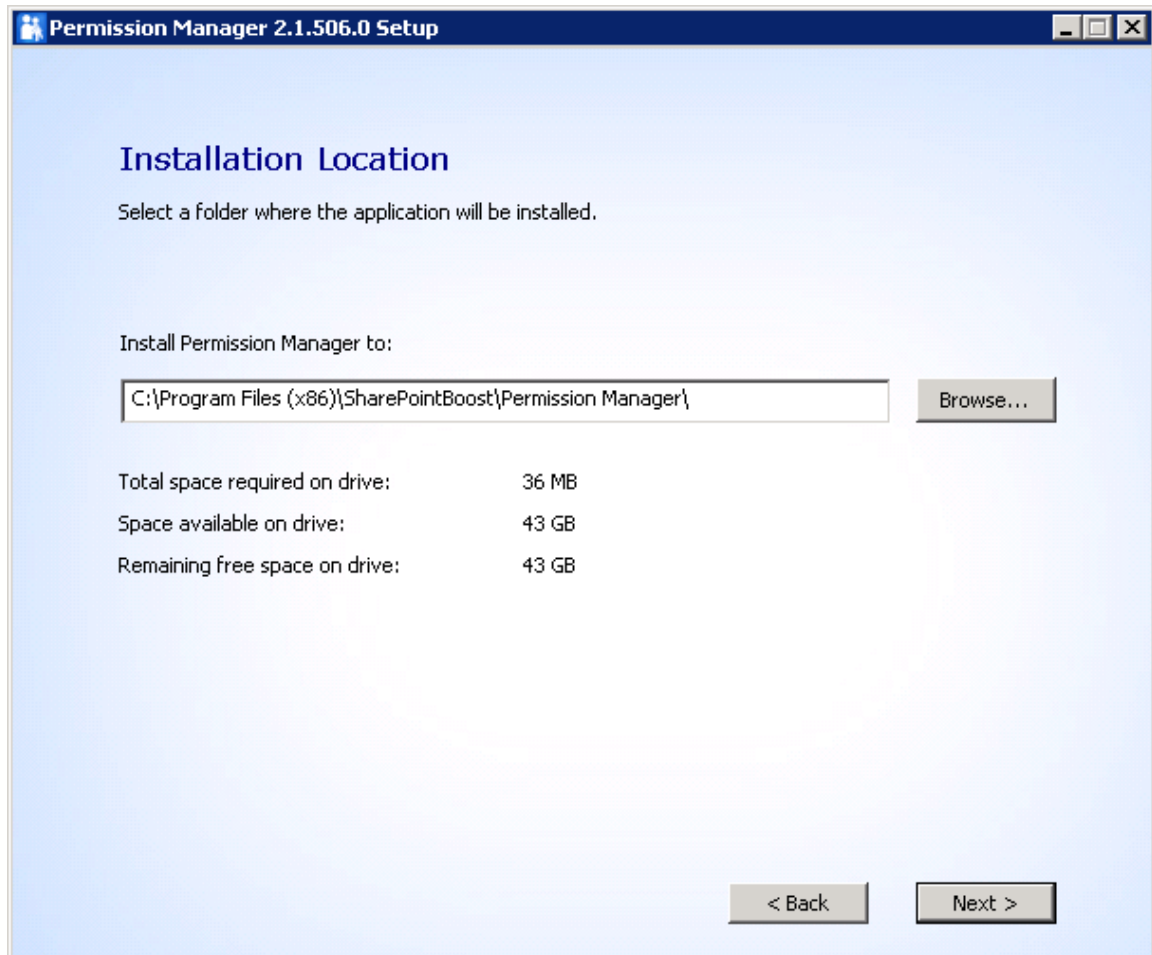


*Database Name:* Type in any name (for example BoostSolutionsEnterprise). Then Permission Manager configuration data will be saved there.

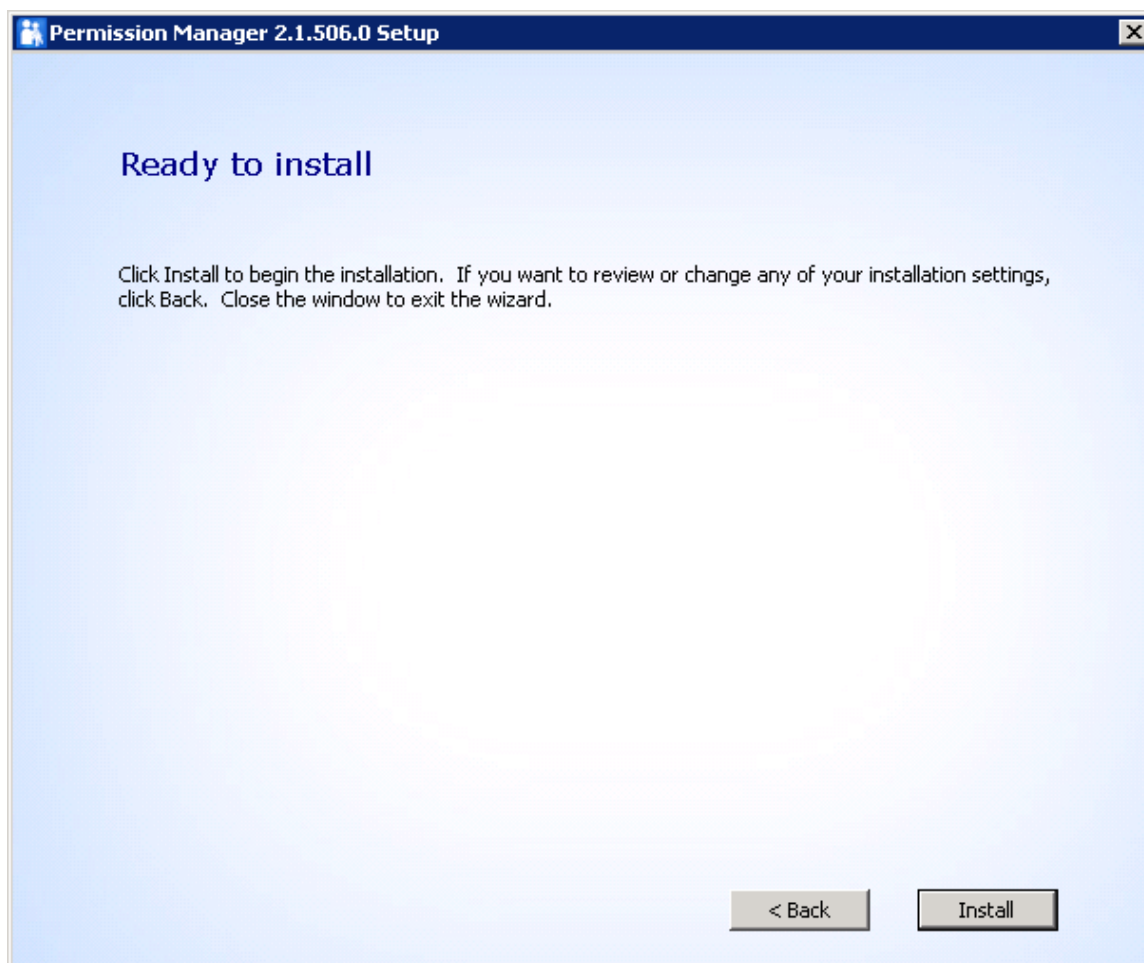
Specify the authentication, then click **Test Connection** to check if connection success.

Click **Next**.

6. Choose a directory for the installation. The default path is *C:\Program Files(x86)\SharePointBoost\Permission Manager*.

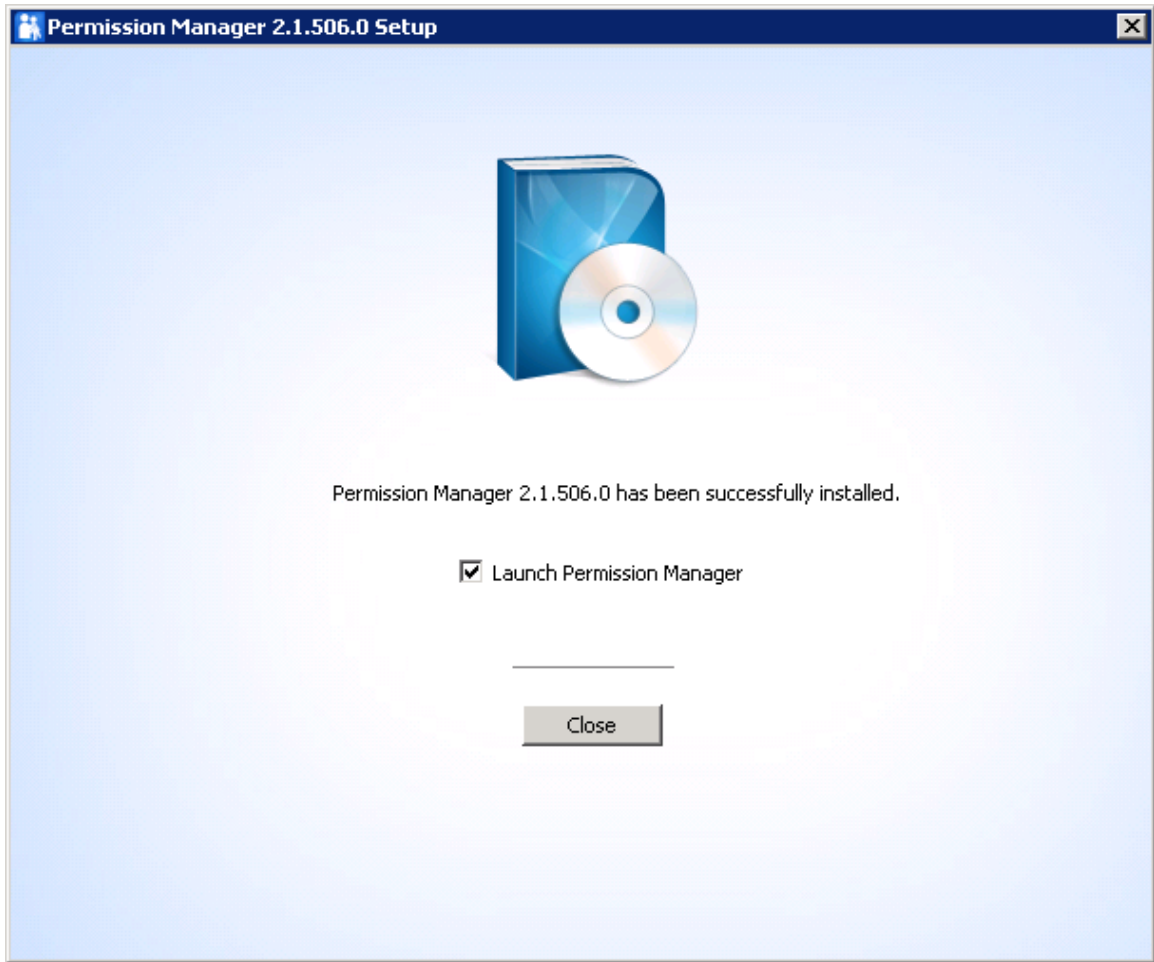


7. You can select a different location by clicking **Browse**. Then click **Next**.
8. Confirm the installation, and click **Install**.



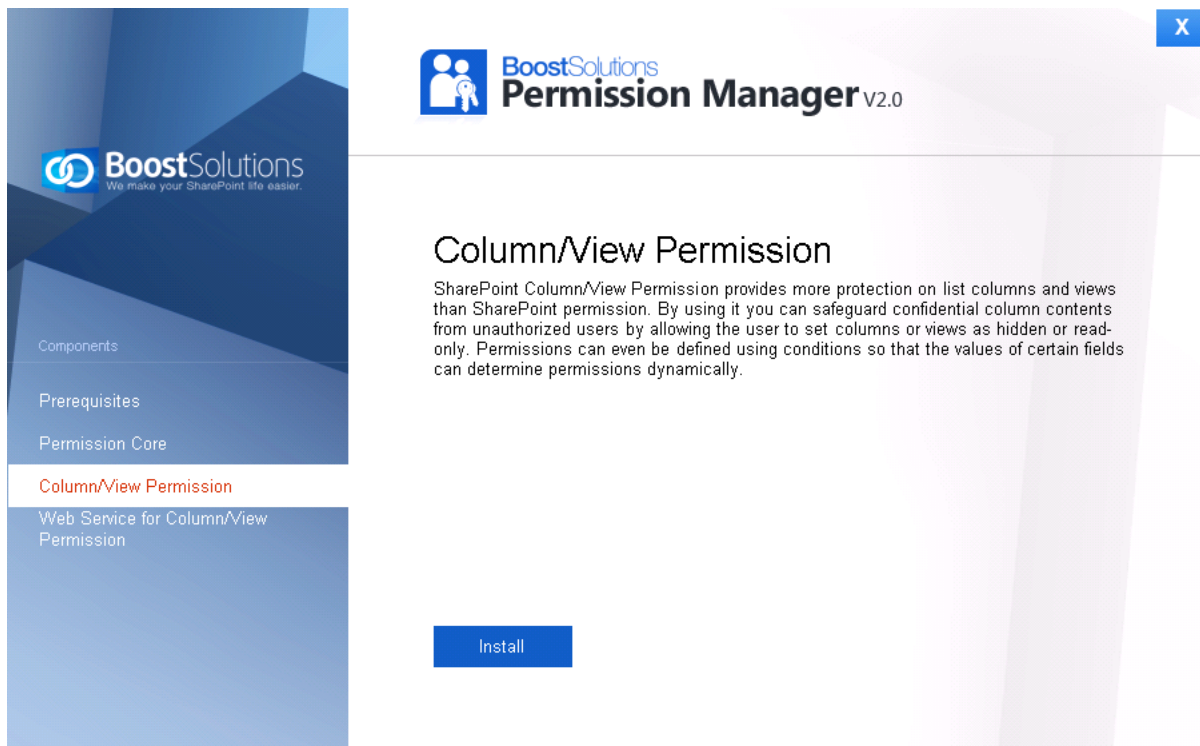
9. Wait installation complete, and click **Close**.





### 3.4 Install Column/View Permission

1. In Permission Manager install wizard, select **Column/View Permission** and click **Install**.



2. When the setup wizard appears, click Next button.
3. A system check is performed to verify if your machine meets all the requirements for installing the product. After the system check is finished, click **Next**.
4. Review and accept the **End-User License Agreement** and click **Next**.
5. In the **Web Application Deployment Targets**, select the web applications you are going to install and click Next.

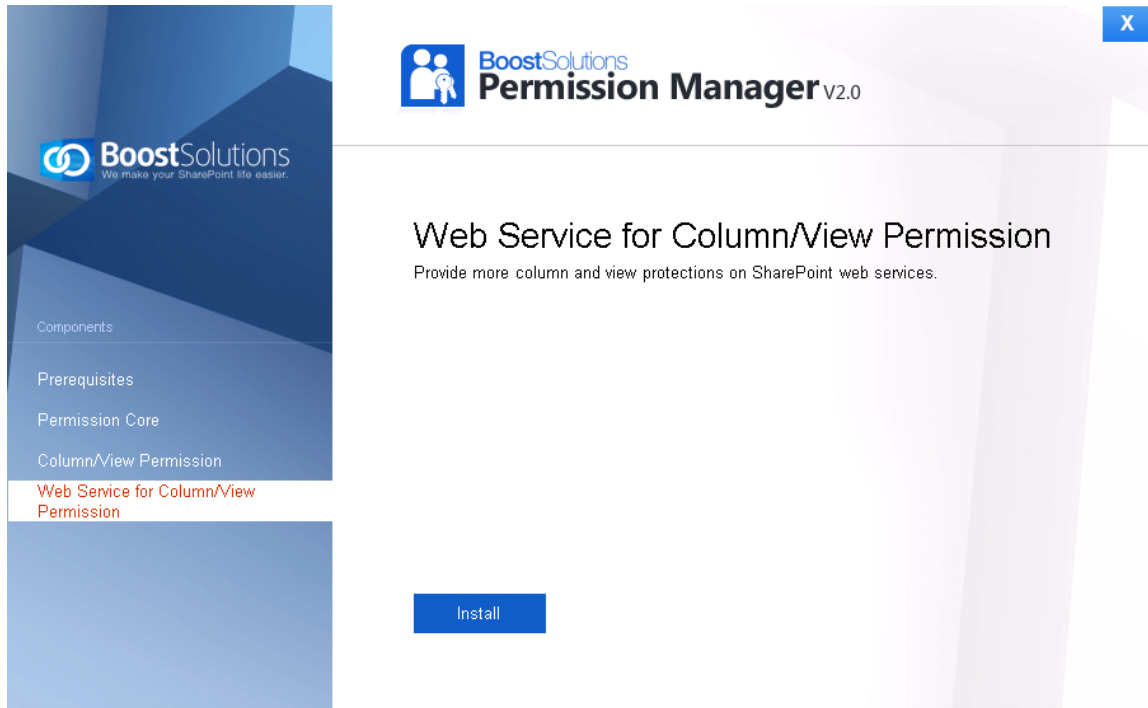
**Note** If you select **Automatically activate features**, the product features will be activated in the target site collection during the installation process. If you want to manually activate the product feature later, uncheck this box.

6. Upon completion of the installation, details are displayed showing which web applications you product has been installed to.
7. Click **Close** to finish the installation.

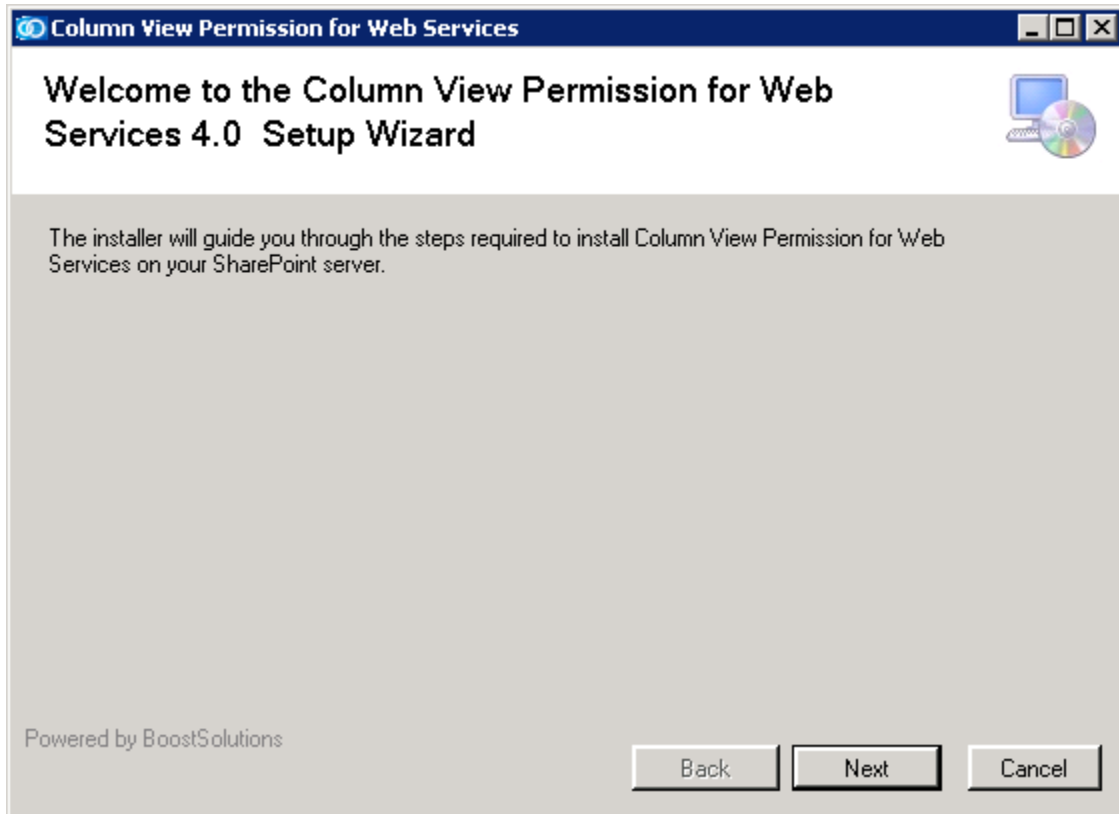
**Note:** You need to install Column View Permission for Web Service on each web front end after the installation finished.

### 3.5 Install Column View Permission for Web Service

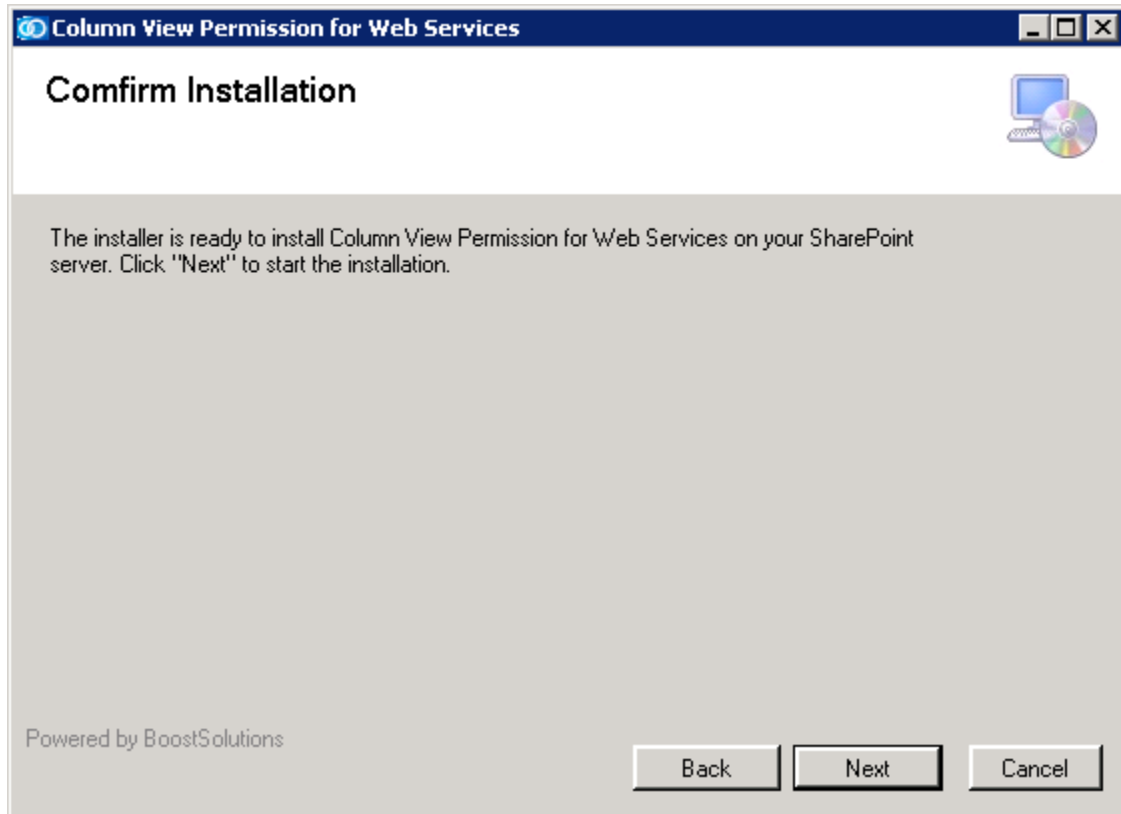
1. In Permission Manager install wizard, select **Column View Permission for Web Service** and click **Install**.



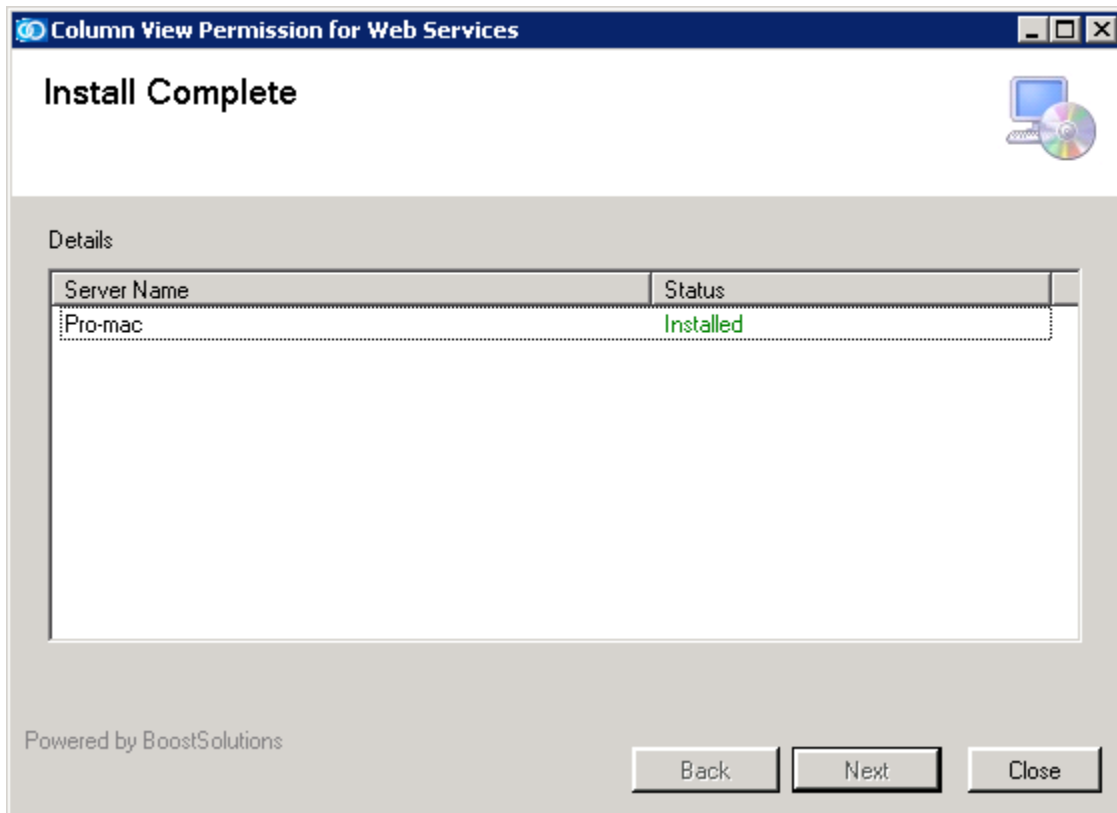
2. The setup wizard appears, click **Next** button.



3. After confirming to install Column View Permission for Web Service in the wizard, click **Next**.



4. Upon completion of the installation, details are displayed showing on which web front end the Column/View Permission for Web Service has been installed.



5. Then, repeat above steps to install Column View Permission for Web Service on each web front end in the SharePoint farm.

## 4. Access Permission Manager

1. After installation, open a browser and enter: [http://<machine>: 8787](http://<machine>:8787)

Where <machine> is the host name or IP address of the machine running SharePoint services. If the default port number has been changed from 8787, enter the new port number.

2. Then, enter username (domain\user) and password, click **Sign In**.

## 5. Repair Instructions

### 5.1 Repair Prerequisites

To repair the prerequisites, double click Setup.exe file. Select **Prerequisites**, and click **Install**.

If the setup file has been deleted, please download it from  
<https://www.boostsolutions.com/permission-manager.html>

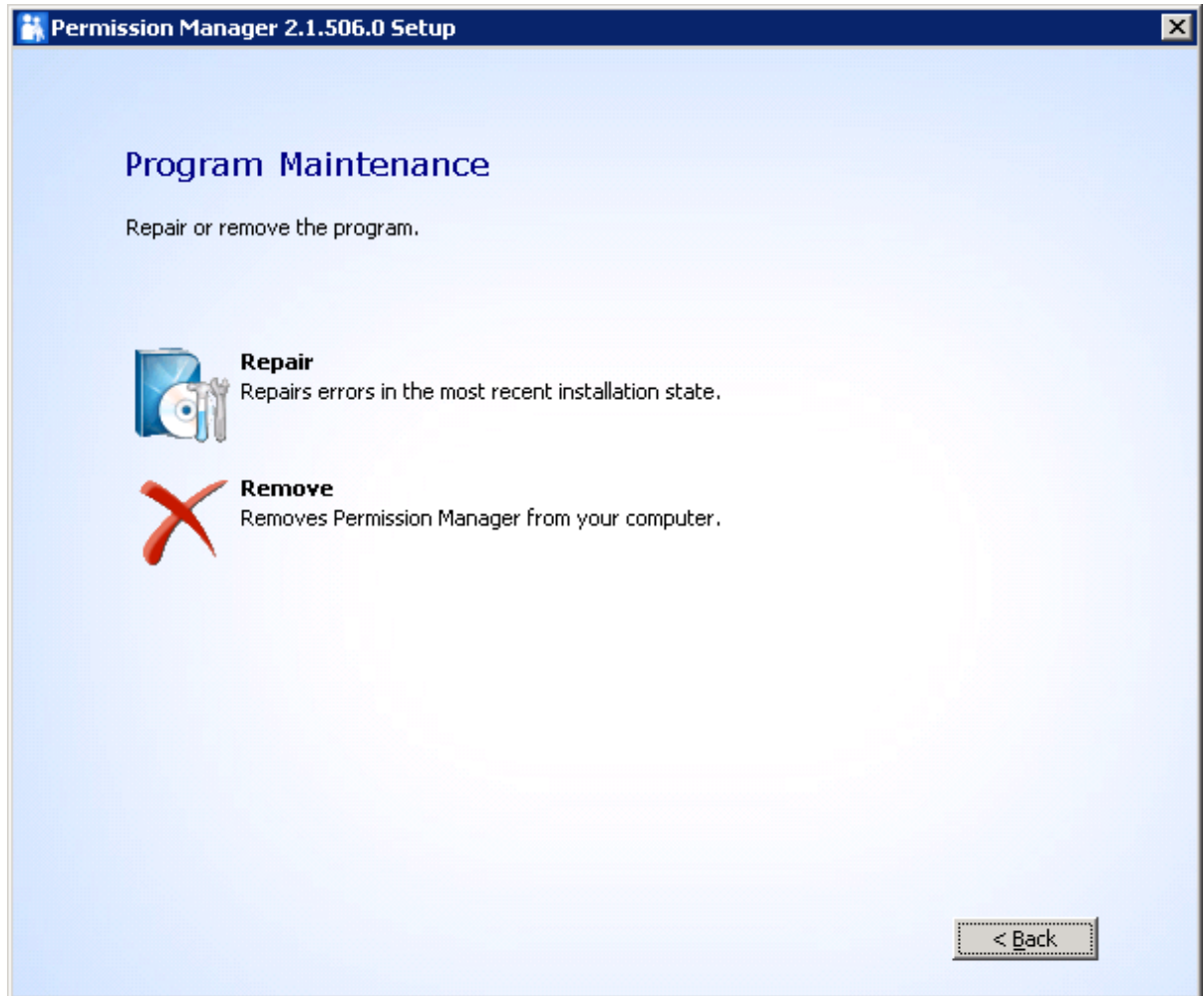
In the Repair or Remove window, select **Repair**, and click **Next**.

### 5.2 Repair Permission Core

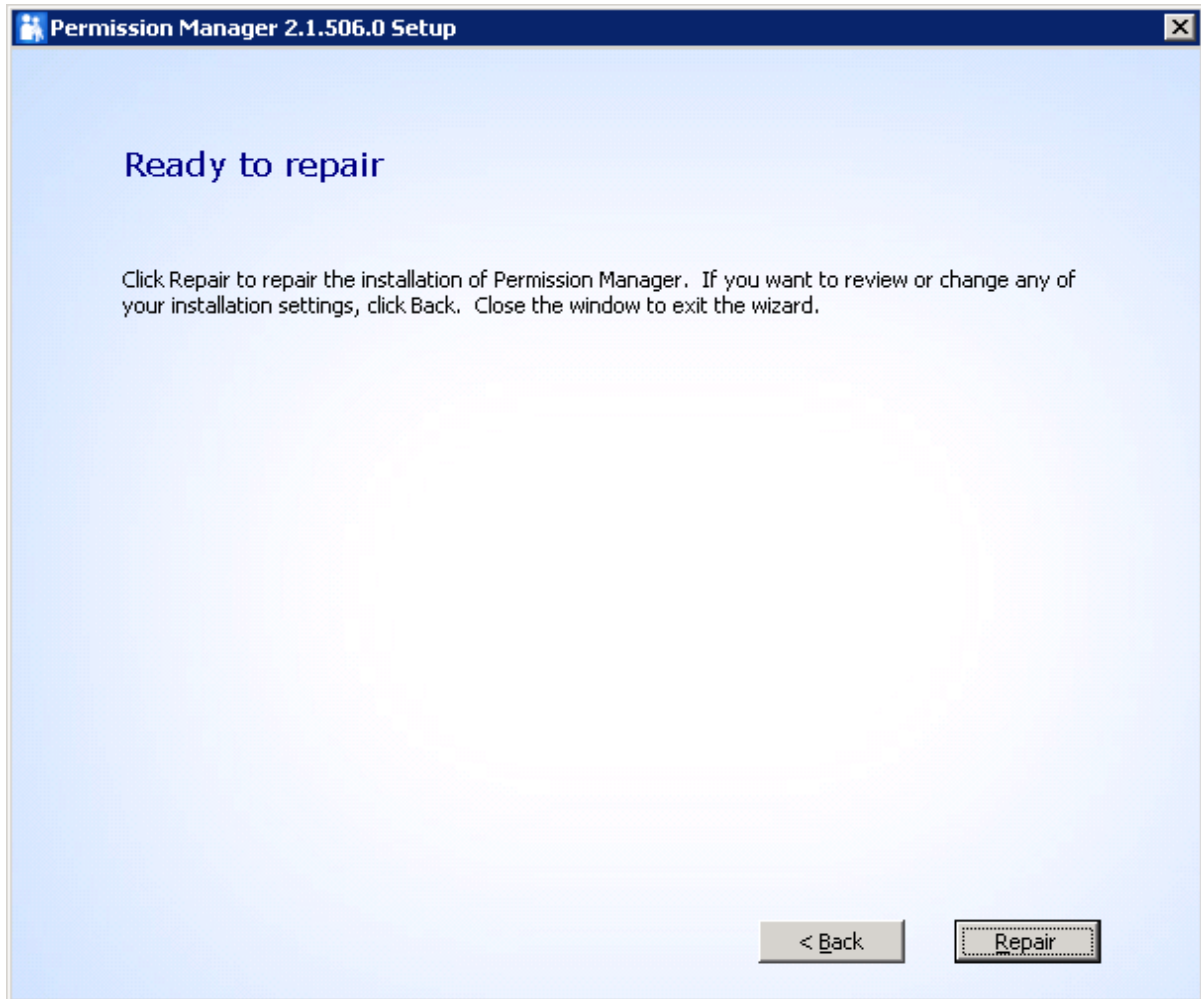
If you want to repair Permission Core, double click Setup.exe file. Select **Permission Core**, and click **Install**.

In the Program Maintenance window, select **Repair**.





Then, in the Begin repair of Permission Manager window, click **Repair** button.



### 5.3 Repair Column/View Permission

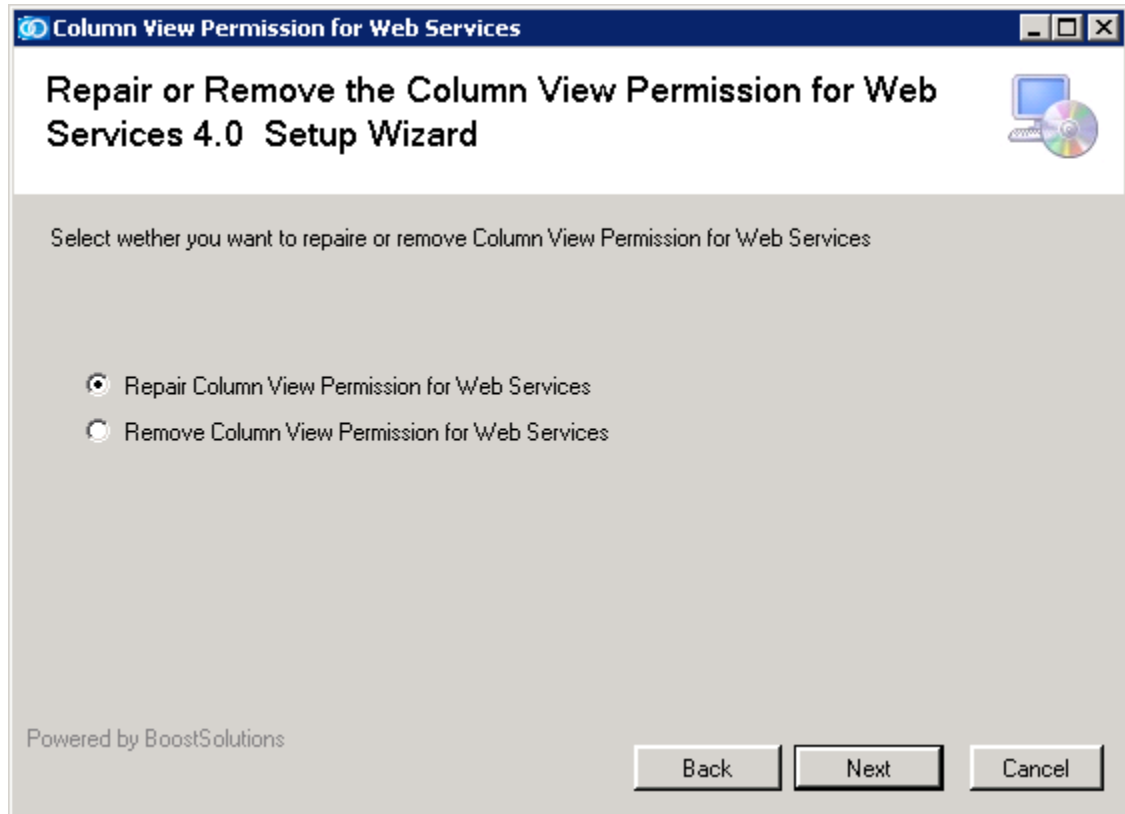
To repair Column/View Permission, double click Setup.exe file. Select **Column/View Permission**, and click **Install**.

In the Repair or Remove window, select **Repair**, and click **Next**.

### 5.4 Repair Column/View Permission for Web Service

To repair Column/View Permission for Web Services, double click Setup.exe file. Select **Column/View Permission for Web Services**, and click **Install**.

In the Repair or Remove window, select **Repair Column View Permission for Web Services**, and click **Next**.



## 6. Upgrade

### 6.1 Upgrade Prerequisites

To upgrade the prerequisites, double click **Setup.exe** file. Select Prerequisites, and click **Install**.

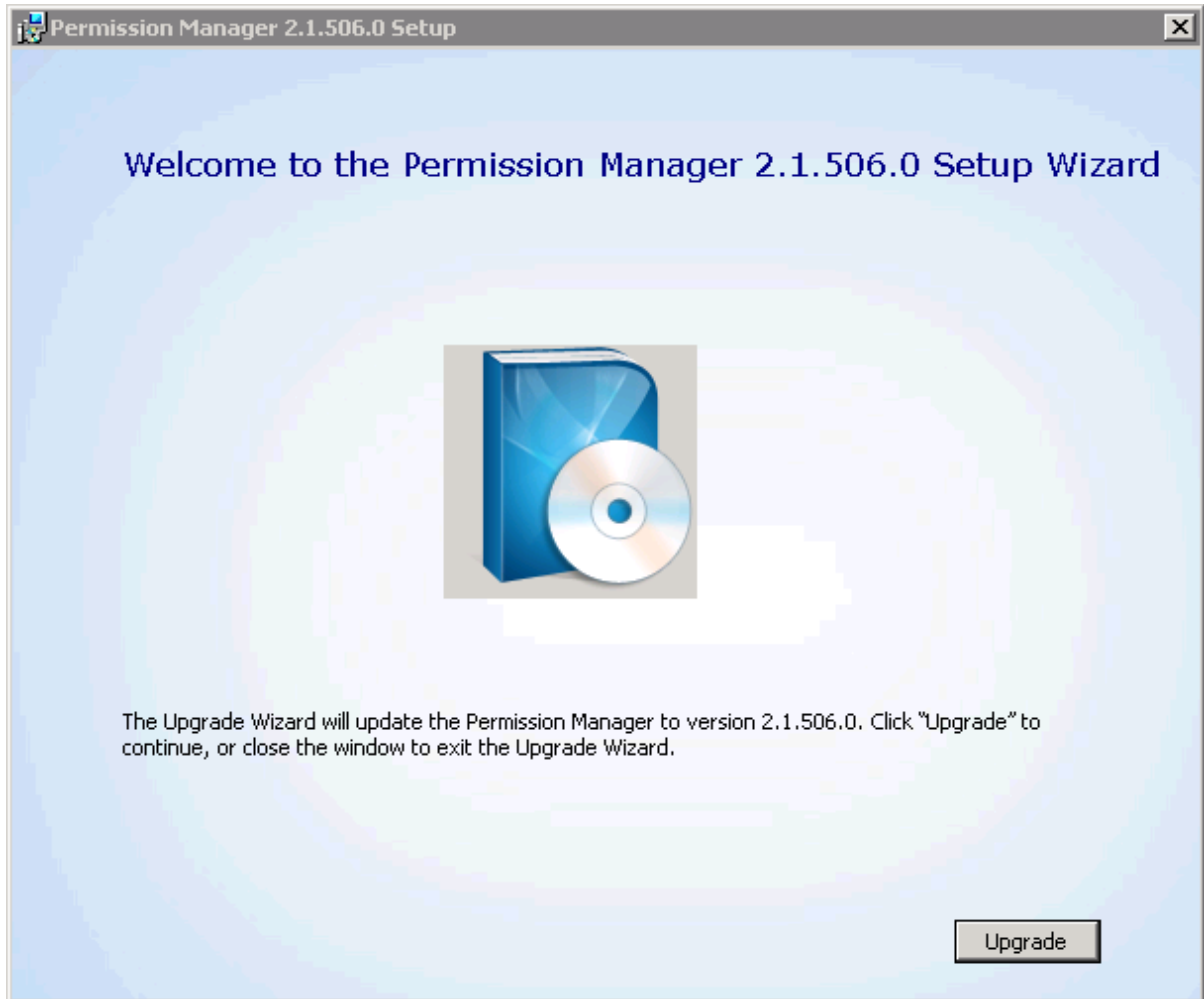
For the latest version, please download it from <http://www.boostsolutions.com/permission-manager.html>

In the **Upgrade or Remove** window, select **Upgrade**, and click **Next**.

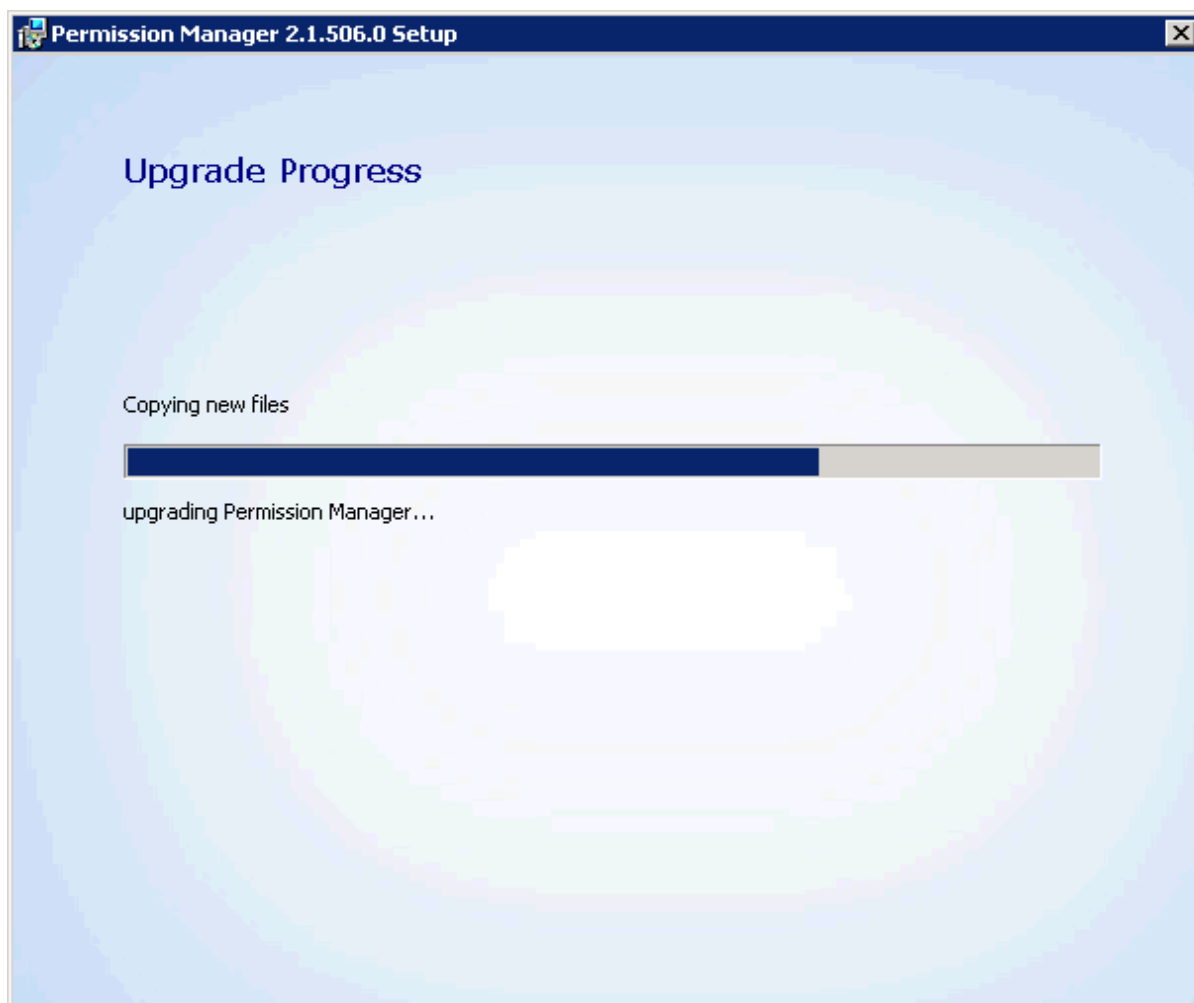
### 6.2 Upgrade Permission Core

If you want to upgrade Permission Core, double click Setup.exe file. Select Permission Core, and click **Install**.

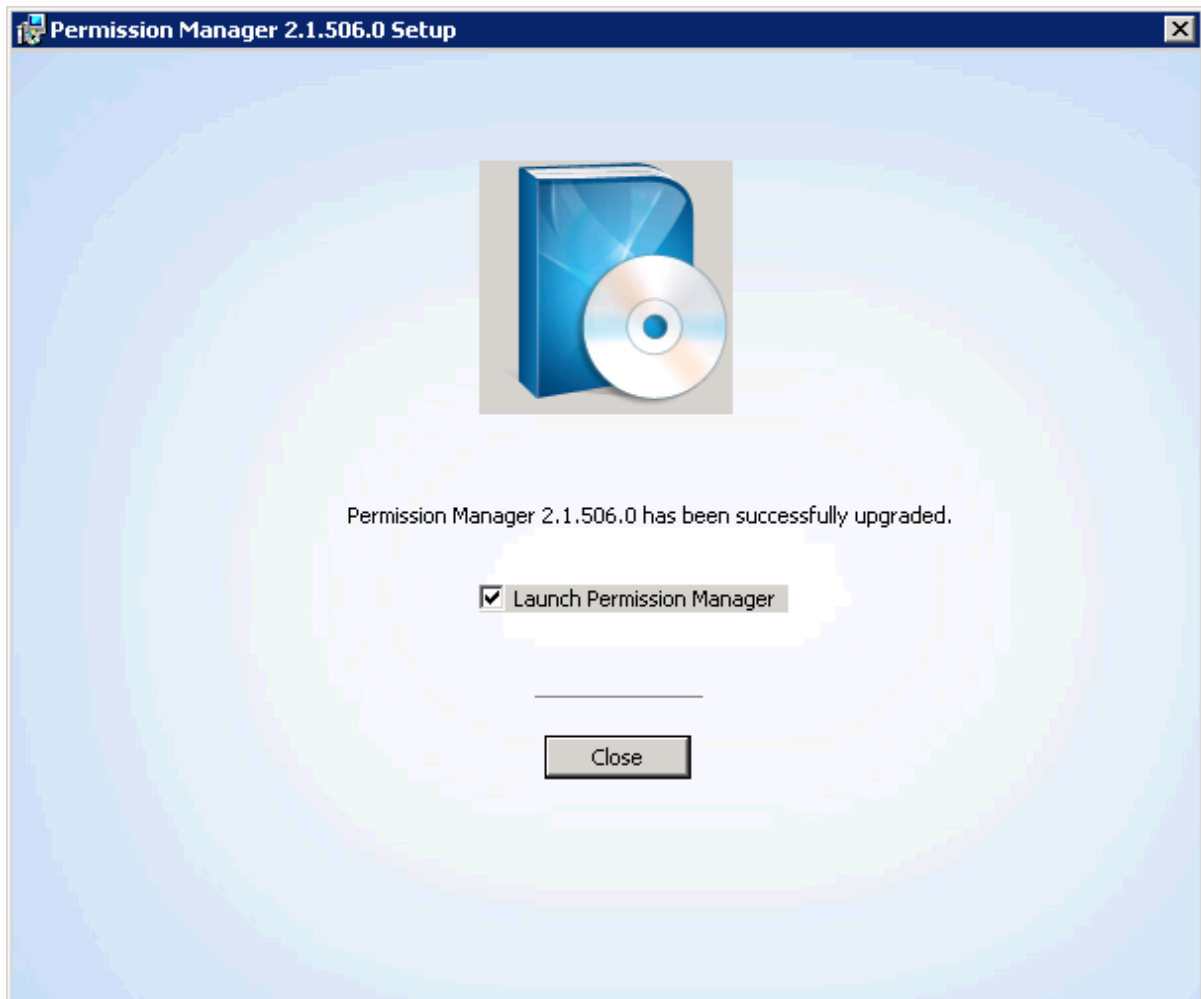
In the wizard window, click **Next**.



Then, the installer will start to upgrade.



Wait installation complete, and click **Close**.



## 7. Uninstallation Instructions

Permission Manager contains four components: Prerequisites, Permission Core, Column/View Permission and Column/View Permission for Web Services.

To uninstall the product completely, you need to uninstall all above four components.

### 7.1 Uninstall Prerequisites

If you want to uninstall the product, double-click the Setup.exe file. (If the setup file has been deleted, please download it from <http://www.boostsolutions.com/permission-manager.html>)

In the Repair or Remove window, select **Remove**, and click **Next**.

The prerequisites are removed then.

### 7.2 Uninstall Permission Core

There are two ways to uninstall Permission Core.

- Uninstall in control panel

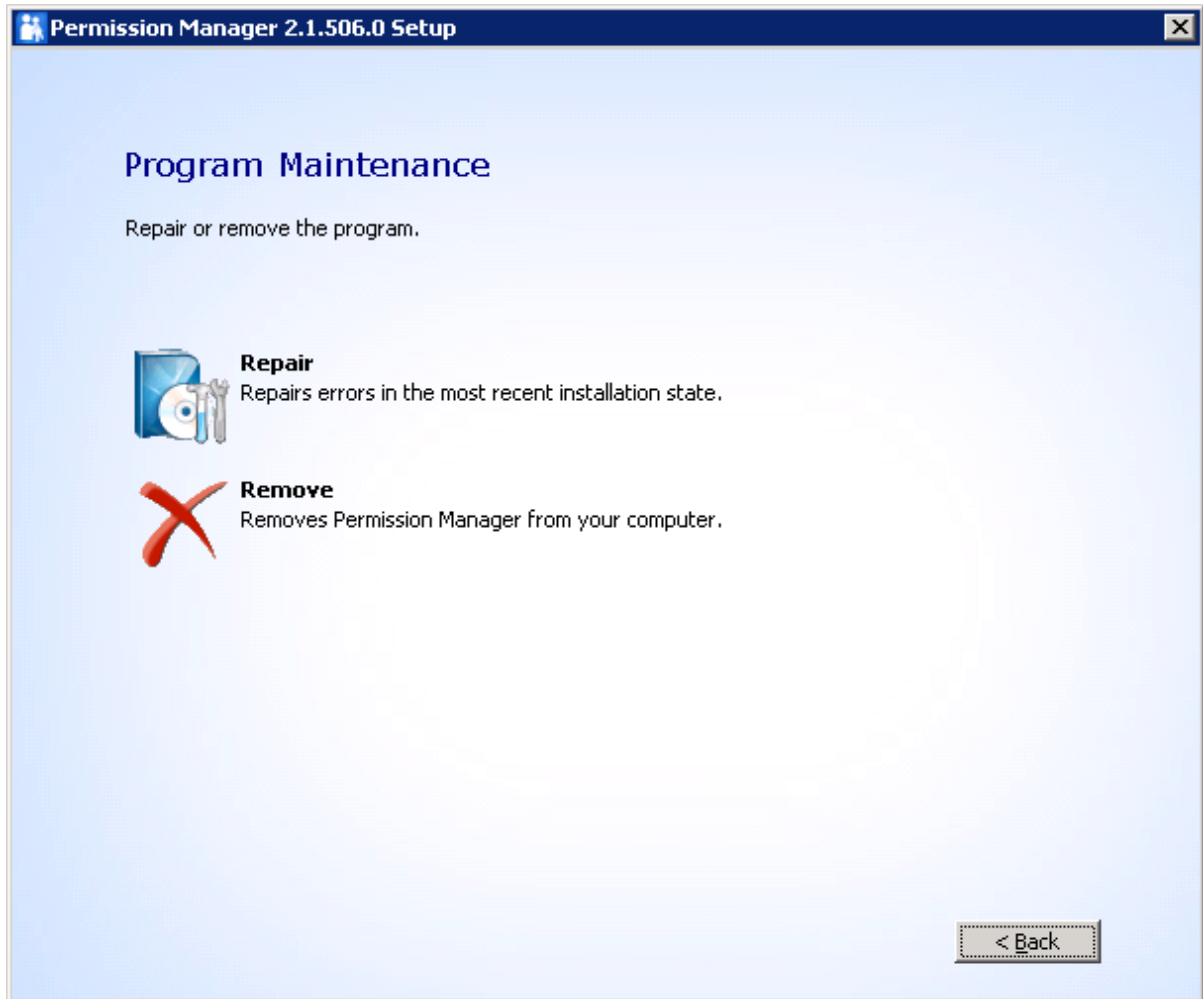
Navigate to Start > Control Panel > Programs > Programs and Features, select Permission Manager, and click **Uninstall**.

- Uninstall with Setup file.

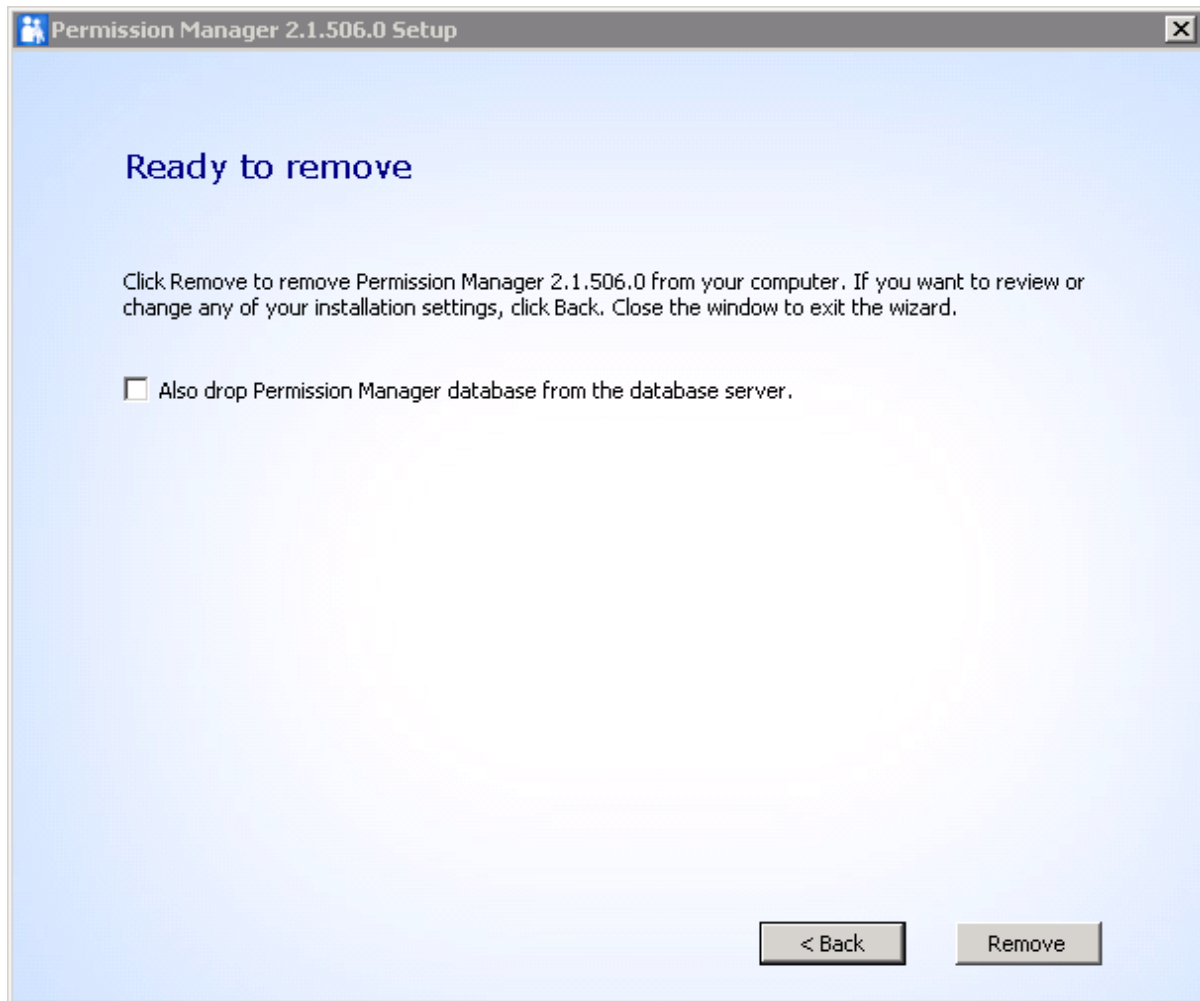
To uninstall Permission Core, double click Setup.exe file. Select **Permission Core**, and click **Install**.

In the Program Maintenance window, select **Remove**.





Select if the product database deleted during uninstallation, then click **Remove** button.



Permission Core is removed then.

### 7.3 Uninstall Column/View Permission

To uninstall Permission Core, double click Setup.exe file. Select **Column/View Permission**, and click **Install**.

In the Repair or Remove window, select **Remove**, and click **Next**.

Then Column/View Permission is removed.

### 7.4 Uninstall Column/View Permission for Web Service

To uninstall Column/View Permission for Web Service, double click Setup.exe file.

In the Repair or Remove window, select **Remove Column View Permission for Web Services**, and click **Next**.

Then the component is removed.

## **8. Support**

### **8.1 Troubleshooting FAQ**

<https://www.boostsolutions.com/general-faq.html#Show=ChildTitle9>

### **8.2 Contact Info**

#### **Product & Licensing Inquires**

[sales@boostsolutions.com](mailto:sales@boostsolutions.com)

#### **Technical Support (Basic)**

[support@boostsolutions.com](mailto:support@boostsolutions.com)

#### **Technical Support (Premium)**

Please direct your email to the address sent to you in your payment confirmation, otherwise contact [sales@boostsolutions.com](mailto:sales@boostsolutions.com) for assistance.

#### **Request a New Product or Feature**

[feature\\_request@boostsolutions.com](mailto:feature_request@boostsolutions.com)