



# **Text Size Zoom 1.0**

---

## **User Guide**

## **Copyright**

Copyright ©2008-2013 BoostSolutions Co., Ltd. All rights reserved.

All materials contained in this publication are protected by Copyright and no part of this publication may be reproduced, modified, displayed, stored in a retrieval system, or transmitted in any form or by any means, electronic, mechanical, photocopying, recording or otherwise, without the prior written consent of BoostSolutions.

Our web site: <http://www.boostsolutions.com>

## Contents

1. Product Introduction.....	1
2. Installation.....	2
2.1 Product Files.....	2
2.2 Software Requirements .....	3
2.3 Installation .....	4
2.4 Upgrade.....	5
2.5 Uninstallation.....	5
2.6 Command_Line Installation.....	5
2.7 Feature Activation.....	7
3. How to Use Text Size Zoom.....	9
3.1 Add Text Size Zoom Web Part.....	9
3.2 Using Text Size Zoom.....	9
4. Troubleshooting & Support.....	14
Appendix 1: License Management .....	15

## 1. Product Introduction

SharePoint Text Size Zoom web part gives users direct control over their individual SharePoint display, enabling them to quickly and easily change text font size without having to change list or view settings. This customizable web part contains three different zoom options displayed as a set of buttons, allowing for quick text size increases and decreases, as well as a revert option to restore the text to its original font size.

This user guide is used to instruct and guide users to configure and use Text Size Zoom.

For the latest copy of this user guide and other user guides, please visit:

<http://www.boostsolutions.com/download-documentation.html>

## 2. Installation

### 2.1 Product Files

After you download and unzip the Text Size Zoom zip file from [www.boostsolutions.com](http://www.boostsolutions.com), you will find the following files:

Path	Descriptions
Setup.exe	A program that installs and deploys the WSP solution packages to the SharePoint farm.
EULA.rtf	The product End-User-License-Agreement.
Text Size Zoom_V1_User Guide.pdf	User guide for Text Size Zoom in PDF format.
Library\2.0\Setup.exe	The product installer for .Net Framework 2.0.
Library\2.0\Setup.exe.config	A file containing the configuration information for the installer.
Library\4.0\Setup.exe	The product installer for .Net Framework 4.0.
Library\4.0\Setup.exe.config	A file containing the configuration information for the installer.
Solutions\Foundation\BoostSolutions.FoundationSetup12.1.wsp	A SharePoint solution package containing Foundation files and resources for SharePoint 2007 or WSS 3.0.
Solutions\Foundation\BoostSolutions.FoundationSetup14.1.wsp	A SharePoint solution package containing Foundation files and resources for SharePoint 2010 or SharePoint Foundation 2010.
Solutions\Foundation\BoostSolutions.FoundationSetup15.1.wsp	A SharePoint solution package containing Foundation files and resources for SharePoint 2013 or SharePoint Foundation 2013.
Solutions\Foundation\Install.config	A file containing the configuration information for the installer.
Solutions\TextSizeZoom\BoostSolutions.TextSizeZoomSetup12.1.wsp	A SharePoint solution package containing Text Size Zoom files and resources for SharePoint 2007 or WSS 3.0.
Solutions\TextSizeZoom\BoostSolutions.TextSizeZoomSetup14.1.wsp	A SharePoint solution package containing Text Size Zoom files and resources for SharePoint 2010 or

	SharePoint Foundation 2010.
Solutions\TextSizeZoom\BoostSolutions. TextSizeZoomSetup15.1.wsp	A SharePoint solution package containing Text Size Zoom files and resources for SharePoint 2013 or SharePoint Foundation 2013.
Solutions\TextSizeZoom\Install.config	A file containing the configuration information for the installer.

## 2.2 Software Requirements

Before you install Text Size Zoom, ensure your system meets the following requirements:

### SharePoint 2013

Operating System	Microsoft Windows Server 2012 Standard or Datacenter X64 Microsoft Windows Server 2008 R2 SP1
Server	Microsoft SharePoint Foundation 2013 or Microsoft SharePoint Server 2013 Microsoft .NET Framework 4.5
Browser	Microsoft Internet Explorer 8 or above Mozilla Firefox Google Chrome

### SharePoint 2010

Operating System	Microsoft Windows Server 2008 x64 Microsoft Windows Server 2008 R2
Server	Microsoft SharePoint Foundation 2010 or Microsoft SharePoint Server 2010 Microsoft .NET Framework 3.5
Browser	Microsoft Internet Explorer 7 or greater Mozilla Firefox

### SharePoint 2007

Operating System	Microsoft Windows Server 2003 x86/x64 Microsoft Windows Server 2008 x86/x64 Microsoft Windows Server 2008 R2
Server	Microsoft Windows SharePoint Services v3 or Microsoft Office SharePoint Server 2007 Microsoft .NET Framework 2.0 or 3.0 <b>Note:</b> This product is not compatible with SPS 2003 and WSS v2

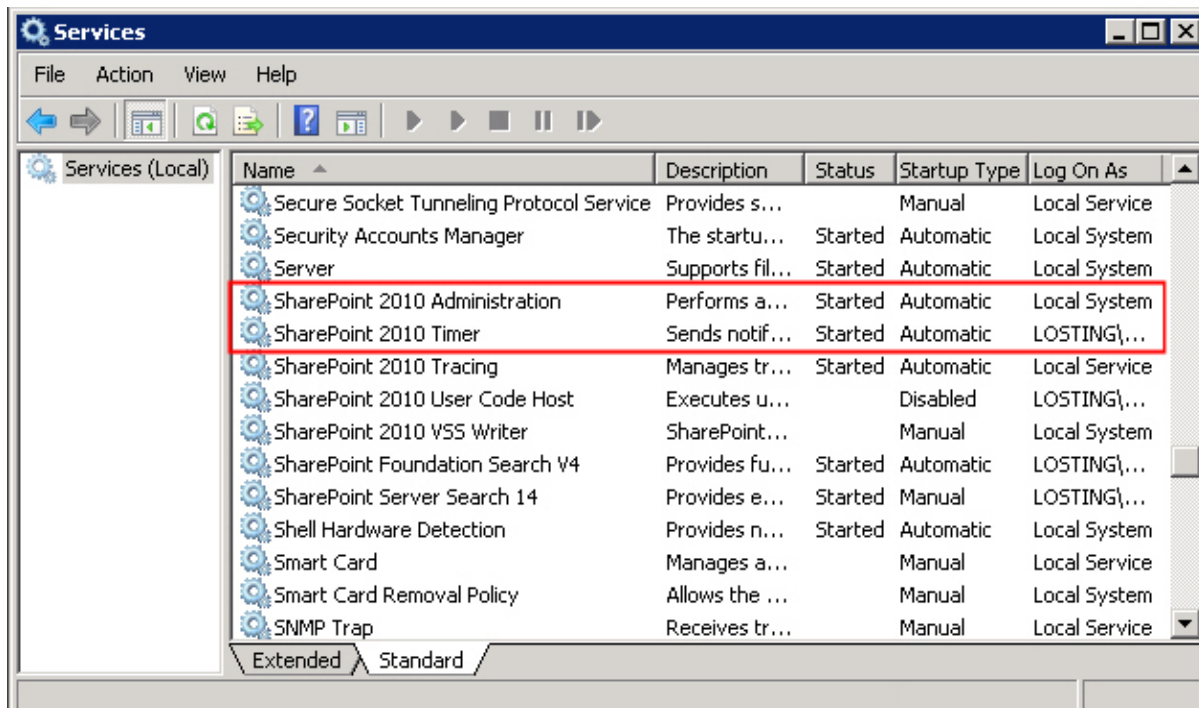
Browser	Microsoft Internet Explorer 6 or greater
---------	------------------------------------------

## 2.3 Installation

Follow these steps to install Text Size Zoom on your SharePoint servers.

### Installation Preconditions

Before you start installing the product, please make sure these services are started on your SharePoint servers: **SharePoint Administration** and **SharePoint Timer**.



Text Size Zoom must be run on one front-end Web server in the SharePoint farm where **Microsoft SharePoint Foundation Web Application services** are running. Check **Central Administration** → **System Settings** for a list of servers running this service.

### Required Permissions

To perform this procedure, you must have specific permissions and rights.

- Member of the local server's **Administrators** group.
- Member of the **Farm Administrators** group.

### To install Text Size Zoom on SharePoint server

- a. Download the zip file (\*.zip) of the product of your choice from the BoostSolutions website, then extract the file.
- b. Open the created folder and run the **Setup.exe** file.

**Note** If you cannot run the setup file, please right click the Setup.exe file and choose Run as administrator.

- c. A system check is performed to verify if your machine meets all the requirements for installing the product. After the system check is finished, click **Next**.
- d. Review and accept the End-User License Agreement and click **Next**.
- e. In the Web Application Deployment Targets, select the web applications you are going to install and click **Next**.

**Note** If you select **Automatically activate features**, the product features will be activated in the target site collection during the installation process. If you want to manually activate the product feature later, uncheck this box.

- f. Upon completion of the installation, details are displayed showing which web applications you product has been installed to. Click **Close**.

## 2.4 Upgrade

Download the latest version of our product and run the **Setup.exe** file.

In the **Program Maintenance** window, select **Upgrade** and click **Next**.

## 2.5 Uninstallation

If you want to uninstall the product, double-click the **Setup.exe** file.

In the **Repair or Remove** window, select **Remove** and click **Next**. Then the application will be removed.

## 2.6 Command\_Line Installation

The following instructions are for installing the solution files for Text Size Zoom in SharePoint 2010 by using the SharePoint STSADM command line tool.

### Required permissions



To use STSADM, you must be a member of the local Administrators group on the server.

### **To install Text Size Zoom to SharePoint servers**

- a. Extract the files from the product zip pack to a folder on one SharePoint server.
- b. Open a command prompt and make sure your path is set with the SharePoint bin directory.

- **SharePoint 2013**

C:\Program Files\Common Files\Microsoft Shared\Web Server Extensions\15\BIN

- **SharePoint 2010**

C:\Program Files\Common Files\Microsoft Shared\Web Server Extensions\14\BIN

- **SharePoint 2007**

C:\Program Files\Common Files\Microsoft Shared\Web Server Extensions\12\BIN

- c. Add the solution files to SharePoint in the STSADM command line tool.

```
stsadm -o addsolution -filename BoostSolutions.TextSizeZoomSetup14.1.wsp
stsadm -o addsolution -filename BoostSolutions.FoundationSetup14.1.wsp
```

- d. Deploy the added solution with the following command:

```
stsadm -o deploysolution -name BoostSolutions.TextSizeZoomSetup14.1.wsp -allowgacdeployment
-url [virtual server url] -immediate
stsadm -o deploysolution -name BoostSolutions.FoundationSetup14.1.wsp -allowgacdeployment -
url [virtual server url] -immediate
```

- e. Wait for the deployment to complete. Check the final status of the deployment with this command:

```
stsadm -o displaysolution -name BoostSolutions.TextSizeZoomSetup14.1.wsp
stsadm -o displaysolution -name BoostSolutions.FoundationSetup14.1.wsp
```

The result should contain a <Deployed> parameter for which the value is TRUE.

- f. In the STSADM tool, activate the features.

```
stsadm -o activatefeature -name Brandysoft.SharePoint.FontSizeChange -url [site collection url] -
force
```

### **To remove Text Size Zoom from SharePoint servers**

- a. Removal is initiated with the following command:

```
stsadm -o retractsolution -name BoostSolutions.TextSizeZoomSetup14.1.wsp -immediate -url [virtual server url]
```

- b. Wait for the removal to finish. To check the final status of the removal you can use the following command:

```
stsadm -o displaysolution -name BoostSolutions.TextSizeZoomSetup14.1.wsp
```

The result should contain the <Deployed> parameter for which the value is FALSE and the <LastOperationResult> parameter with the RetractionSucceeded value.

- c. Remove the solution from the SharePoint solutions storage:

```
stsadm -o deletesolution -name BoostSolutions.TextSizeZoomSetup14.1.wsp
```

## **To remove BoostSolutions Foundation from SharePoint servers**

The BoostSolutions Foundation is designed to provide a centralized interface to manage licenses for all BoostSolutions software from within SharePoint Central Administration. If you are still using BoostSolutions product on your SharePoint server, DO NOT remove Foundation from the servers.

- a. Removal is initiated with the following command:

```
stsadm -o retractsolution -name BoostSolutions.FoundationSetup14.1.wsp -immediate -url [virtual server url]
```

- b. Wait for the removal to finish. To check the final status of the removal you can use the following command:

```
stsadm -o displaysolution -name BoostSolutions.FoundationSetup14.1.wsp
```

The result should contain the <Deployed> parameter for which the value is FALSE and the <LastOperationResult> parameter with the RetractionSucceeded value.


- c. Remove the solution from the SharePoint solutions storage:

```
stsadm -o deletesolution -name BoostSolutions.FoundationSetup14.1.wsp
```

## **2.7 Feature Activation**

### **Activate Text Size Zoom's feature in site collection**

By default, the application's features are automatically activated once the product is installed. You can also activate the product feature manually.

- a. On the Site Actions menu  click **Site Settings**.
- b. Under **Site Collection Administration** click **Site collection features**.
- c. Find the application feature and click **Activate**. After a feature is activated, the Status column lists the feature as **Active**.

**Text Size Zoom 1.4.508.0**

Allow users to increase/decrease the default text size displayed in SharePoint. (Powered by BoostSolutions)

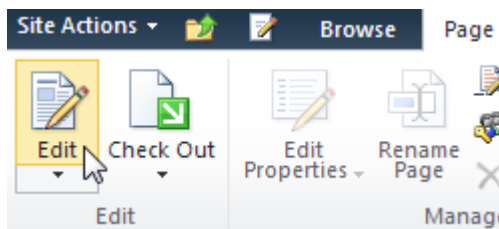
## 3. How to Use Text Size Zoom

### 3.1 Adding Text Size Zoom Web Part to your page

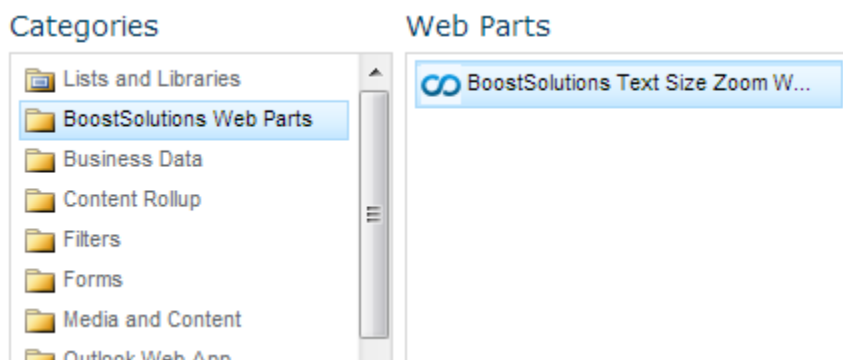
Before you use the Text Size Zoom web part to change font size, you need to add the Text Size Zoom web part to your page.

To add a Web Part you must have at least Design permission level.

- a. From any page, click the **Page** tab on the ribbon and then click the **Edit** command.



- b. Click on the page where you want to add the Web Part and click the **Insert** tab followed by the Web Part.
- c. Under Categories, select the **Boost Solutions Web Parts** category. Next select the **BoostSolutions Text Size Zoom Web Part** under the Web Parts section and click **Add**.



- d. Click **Save & Close** to save the page. You will find the web part on your page.

## 3.2 Using Text Size Zoom

After installation, you will find the Text Size Zoom web part on your page. You can change the size of all the text on your page according to your preferences.

Home

### About BoostSolutions

BoostSolutions, a Microsoft® Gold Certified Partner, is a leading developer of SharePoint add-ons, web parts and workflow solutions that bridge the gap between SharePoint out-of-the-box and the custom functionality needed to make daily business operations smooth and efficient.

More than 2,000 companies from over 50 countries worldwide have successfully integrated BoostSolutions web parts and solutions into their SharePoint architecture. Our customers range from small businesses to large multinational corporations.

[Learn more about our customers](#)



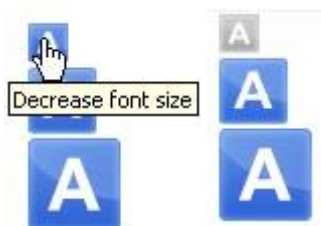
Our Vision:

Imagine your business technology and processes' running so smoothly that you barely notice they exist, or that you have access to customized SharePoint software that performs all the functions you need. Imagine that you



### Decrease Font Size

If you feel the text size is too big, just decrease the text size by clicking the smallest button on the web part. Once selected, the font size will decrease and the smallest button will be grayed out.




Home

About BoostSolutions  
BoostSolutions, a Microsoft® Gold Certified Partner, is a leading developer of SharePoint add-ons, web parts and workflow solutions that bridge the gap between SharePoint out-of-the-box and the custom functionality needed to make daily business operations smooth and efficient.

More than 2,000 companies from over 50 countries worldwide have successfully integrated BoostSolutions web parts and solutions into their SharePoint architecture. Our customers range from small businesses to large multinational corporations.

[Learn more about our customers](#)

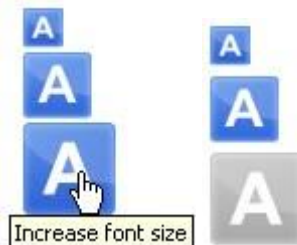


Our Vision:

Imagine your business technology and processes' running so smoothly that you barely notice they exist, or that you have access to customized SharePoint software that performs all the functions you need. Imagine that you can quickly optimize your SharePoint environment, allowing you to keep your business competitive without having to assume unnecessary development and financial burdens. For a small or mid-sized business this may

### **Increase Font Size**

If you prefer a larger font size, click the largest button on the web part. As with the decrease font size button, the increase font size button will be grayed out once the maximum text size is reached.



Home

[About BoostSolutions](#)

BoostSolutions, a Microsoft® Gold Certified Partner, is a leading developer of SharePoint add-ons, web parts and workflow solutions that bridge the gap between SharePoint out-of-the-box and the custom functionality needed to make daily business operations smooth and efficient.

More than 2,000 companies from over 50 countries worldwide have successfully integrated BoostSolutions web parts and solutions into their SharePoint architecture. Our customers range from small businesses to large multinational corporations.

[Learn more about our customers](#)



Our Vision:

**Restore Default Font Size**

To restore the default font size, simply click the middle button on the web part.



---

Home

## About BoostSolutions

BoostSolutions, a Microsoft® Gold Certified Partner, is a leading developer of SharePoint add-ons, web parts and workflow solutions that bridge the gap between SharePoint out-of-the-box and the custom functionality needed to make daily business operations smooth and efficient.

More than 2,000 companies from over 50 countries worldwide have successfully integrated BoostSolutions web parts and solutions into their SharePoint architecture. Our customers range from small businesses to large multinational corporations.

[Learn more about our customers](#)



### Our Vision:

Imagine your business technology and processes' running so smoothly that you barely notice they exist, or that you have access to customized SharePoint software that performs all the functions you need. Imagine that you





## 4. Troubleshooting & Support

### **Troubleshooting FAQ:**

<http://www.boostsolutions.com/general-faq.html#Show=ChildTitle9>

### **Contact Info:**

Product & Licensing Inquires: [sales@boostsolutions.com](mailto:sales@boostsolutions.com)

Technical Support (Basic): [support@boostsolutions.com](mailto:support@boostsolutions.com)

Request a New Product or Feature: [feature\\_request@boostsolutions.com](mailto:feature_request@boostsolutions.com)

### **Live Chat:**

<http://www.boostsolutions.com/support/chat/livezilla.php?intgroup=U3VwcG9ydA==&reset=true>

## Appendix 1: License Management

You can use Text Size Zoom without entering any license code for a period of 30 days from when you first use it.

To use product without limitation, you will need to purchase a license and register the product.

### Finding License Information

- a. In the products main page, click the trial link and enter the **License Management Center**.
- b. Click Download License Information, choose a license type and download the information (Server Code, Farm ID or Site Collection ID).

Download License Information

Download the license type information and send to sales@boostsolutions.com to get license.

**Choose a license type**

Server License  
Server Code: e4c9171bd1aa49cea8903e0a7e0e812643f8360be  
a74459ca3bf6b2e0240f194

Farm License  
Farm ID: {e4c9171b-d1aa-49ce-a890-3e0a7e0e8126}  
Number of Users: 24 user(s)

Site Collection License  
Site Collection ID: 1316fb72-1436-41cf-949d-56ca6020320e Change  
Site Collection: <http://pro-mac>

Download Close

In order for BoostSolutions to create a license for you, you need to send us your SharePoint environment identifier (Note: different license types need different information). A server license needs a server code; a Farm license needs a farm ID; and a site collection license needs a site collection ID.

- c. Send the above information to us ([sales@boostsolutions.com](mailto:sales@boostsolutions.com)) to generate a license code.

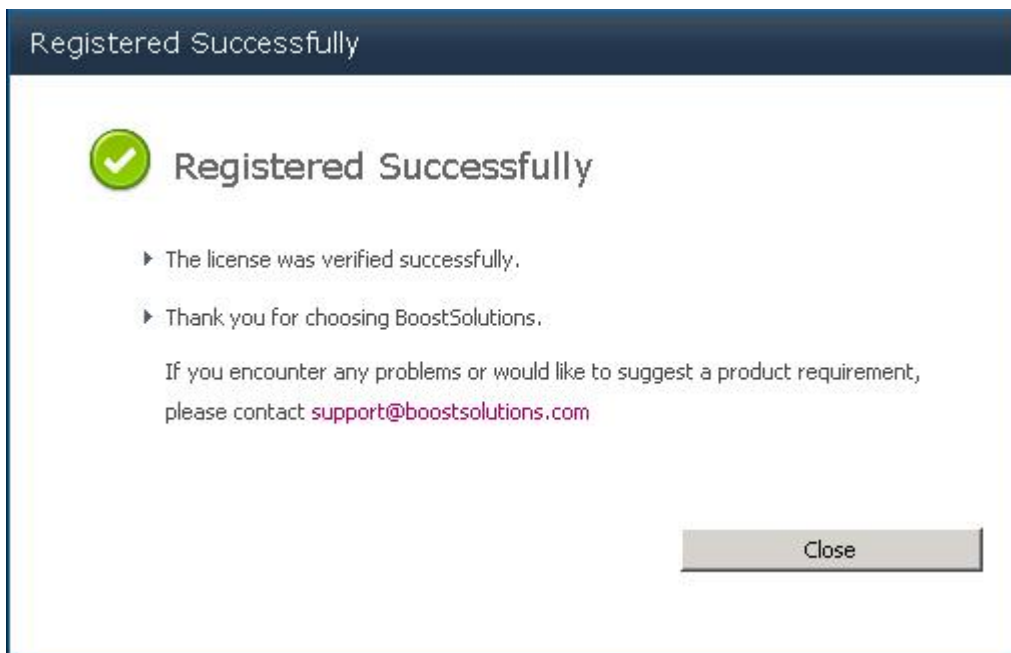
### License Registration

- a. When you receive a product license code, enter the **License Management Center** page.
- b. Click **Register** on the license page and a **Register or Update license** window will open.



The screenshot shows a dialog box titled "Register or Update license". The main text reads: "Please upload a license code file or enter the license code to activate the product." There are two radio button options: "Upload a license code file" (which is selected) and "Enter license code". Under the first option, there is a text input field and a "Browse..." button. Under the second option, there is a larger text input field. At the bottom of the dialog, there are two buttons: "Register" and "Close".

- c. Upload the license file or enter the license code and click **Register**. You will get confirmation that your license has been validated.



The screenshot shows a dialog box titled "Registered Successfully". It features a green checkmark icon in a circle. The main text reads: "Registered Successfully". Below this, there are two bullet points: "▶ The license was verified successfully." and "▶ Thank you for choosing BoostSolutions." A paragraph of text follows: "If you encounter any problems or would like to suggest a product requirement, please contact [support@boostsolutions.com](mailto:support@boostsolutions.com)". At the bottom right, there is a "Close" button.

For more details on license management, see the [BoostSolutions Foundation](#).