



Item Permission Batch 4.0

User Guide

Copyright

Copyright ©2008-2020 BoostSolutions Co., Ltd. All rights reserved.

All materials contained in this publication are protected by Copyright and no part of this publication may be reproduced, modified, displayed, stored in a retrieval system, or transmitted in any form or by any means, electronic, mechanical, photocopying, recording or otherwise, without the prior written consent of BoostSolutions.

Our web site: <http://www.boostsolutions.com>

Contents

1.	Introduction	1
2.	Installation	2
2.1	Product Files	2
2.2	Software Requirements	3
2.3	Server Installation	4
2.4	Upgrade.....	6
2.5	Uninstallation.....	6
2.6	Command_Line Installation	6
2.7	Feature Activation.....	8
2.8	Installation FAQs	8
3.	Manage Items Permissions	11
3.1	Bulk Assign Permissions.....	12
3.2	Assign Permissions to All Items	13
3.3	Bulk Remove Permissions.....	13
3.4	Remove Permissions from All Items.....	15
3.5	Inherit Permissions from List.....	15
3.6	Assign Permission to Specific Users.....	16
3.7	Assign Permission to Users Dynamically	17
3.8	Assign Permissions According to Metadata	20
4.	Troubleshooting & Support	22
	Appendix 1: License Management	23

1. Introduction

SharePoint lists store a large number of items and documents that administrators need to manage and assign custom permissions to items or documents, which is time-consuming to manage individually.

With Item Permission Batch, administrators can bulk add or remove custom permissions for items or documents and folders and manage custom permissions based on conditions.

Item Permission Batch contains these features:

- Bulk add or remove permissions
- Manage permissions based on conditions
- Dynamically assign permissions to users or groups
- Bulk inherit permissions from parent list

This user guide is used to instruct and guide users to configure and use Item Permission Batch.

For the latest copy of this user guide and other user guides, please visit:

<http://www.boostsolutions.com/download-documentation.html>

2. Installation

2.1 Product Files

After you download and unzip the Item Permission Batch zip file from www.boostsolutions.com, you will find the following files:

Path	Descriptions
Setup.exe	A program that installs and deploys the WSP solution packages to the SharePoint farm.
EULA.rtf	The product End-User-License-Agreement.
Item Permission Batch_V4_User Guide.pdf	User guide for Item Permission Batch in PDF format.
Library\2.0\Setup.exe	The product installer for .Net Framework 2.0.
Library\2.0\Setup.exe.config	A file containing the configuration information for the installer.
Library\4.0\Setup.exe	The product installer for .Net Framework 4.0.
Library\4.0\Setup.exe.config	A file containing the configuration information for the installer.
Library\6.0\Setup.exe	The product installer for .Net Framework 4.6.
Library\6.0\Setup.exe.config	A file containing the configuration information for the installer.
Solutions\Foundation\BoostSolutions.FoundationSetup14.1.wsp	A SharePoint solution package containing Foundation files and resources for SharePoint 2010 or SharePoint Foundation 2010.
Solutions\Foundation\BoostSolutions.FoundationSetup15.1.wsp	A SharePoint solution package containing Foundation files and resources for SharePoint 2013 or SharePoint Foundation 2013.
Solutions\Foundation\BoostSolutions.FoundationSetup16.1.wsp	A SharePoint solution package containing Foundation files and resources for SharePoint 2016/2019.
Solutions\Foundation\Install.config	A file containing the configuration information for the installer.

Solutions\BatchPermission\ BoostSolutions.PermissionWorkflowSetup14.4.wsp	A SharePoint solution package containing Item Permission Batch files and resources for SharePoint 2010 or SharePoint Foundation 2010.
Solutions\BatchPermission\ BoostSolutions.PermissionWorkflowSetup15.4.wsp	A SharePoint solution package containing Item Permission Batch files and resources for SharePoint 2013 or SharePoint Foundation 2013.
Solutions\BatchPermission\ BoostSolutions.PermissionWorkflowSetup16.4.wsp	A SharePoint solution package containing Item Permission Batch files and resources for SharePoint 2016/2019.
Solutions\BatchPermission\Install.config	A file containing the configuration information for the installer.

2.2 Software Requirements

Before you install Item Permission Batch, ensure your system meets the following requirements:

SharePoint 2019

Operating System	Windows Server 2016 Standard or Datacenter Windows Server 2019 Standard or Datacenter
Server	Microsoft SharePoint Server 2019
Browser	Microsoft Internet Explorer 11 or above Microsoft Edge Mozilla Firefox Google Chrome

SharePoint 2016

Operating System	Microsoft Windows Server 2012 Standard or Datacenter X64 Microsoft Windows Server 2016 Standard or Datacenter
Server	Microsoft SharePoint Server 2016 Microsoft .NET Framework 4.6
Browser	Microsoft Internet Explorer 10 or above Microsoft Edge Mozilla Firefox Google Chrome

SharePoint 2013

Operating System	Microsoft Windows Server 2012 Standard or Datacenter X64 Microsoft Windows Server 2008 R2 SP1
Server	Microsoft SharePoint Foundation 2013 or Microsoft SharePoint Server 2013 Microsoft .NET Framework 4.5
Browser	Microsoft Internet Explorer 8 or above Microsoft Edge Mozilla Firefox Google Chrome

SharePoint 2010

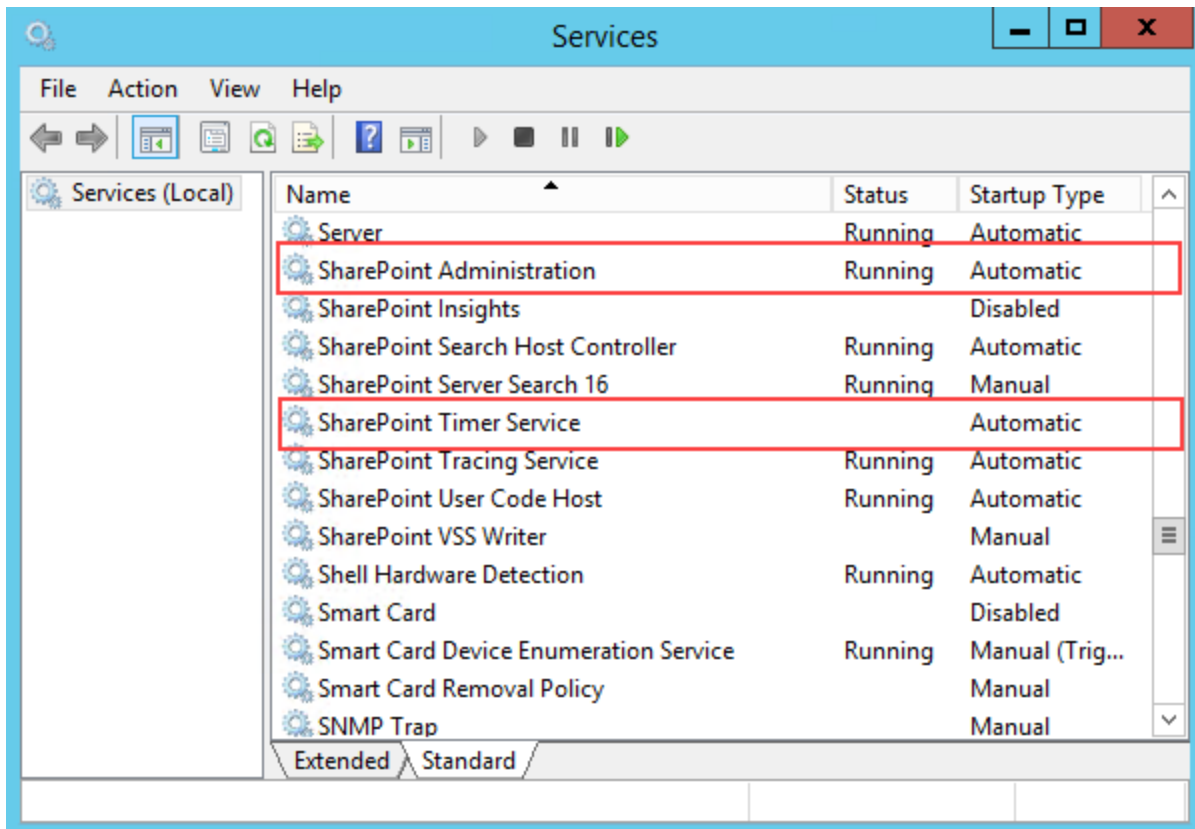
Operating System	Microsoft Windows Server 2008 x64 Microsoft Windows Server 2008 R2
Server	Microsoft SharePoint Foundation 2010 or Microsoft SharePoint Server 2010 Microsoft SharePoint Foundation 2010 SP1 or Microsoft SharePoint Server 2010 SP1 Microsoft .NET Framework 3.5
Browser	Microsoft Internet Explorer 7 or above Mozilla Firefox Google Chrome

2.3 Server Installation

Follow these steps to install Item Permission Batch on your SharePoint servers.

Installation Preconditions

Before you start installing the product, please make sure these services are started on your SharePoint servers: **SharePoint Administration** and **SharePoint Timer Service**.



Item Permission Batch must be run on one front-end Web server in the SharePoint farm where **Microsoft SharePoint Foundation Web Application services** are running. Check **Central Administration -> System Settings** for a list of servers running this service.

Required Permissions

To perform this procedure, you must have specific permissions and rights.

- Member of the local server's **Administrators** group.
- Member of the **Farm Administrators** group.

To install Item Permission Batch on SharePoint server.

- a. Download the zip file (*.zip) for Item Permission Batch from the BoostSolutions website, then extract the file.
- b. Open the created folder and run the **Setup.exe** file.

Note

If you cannot run the setup file, please right click the **Setup.exe** file and choose Run as administrator.

- c. A system check is performed to verify if your machine meets all the requirements for installing the product. After the system check is finished, click **Next**.

- d. Review and accept the End-User License Agreement and click **Next**.
- e. In the **Web Application Deployment Targets**, select the web applications you are going to install and click **Next**.

Note

If you select **Automatically activate features**, the product features will be activated in the target site collection during the installation process. If you want to manually activate the product feature later, uncheck this box.

- f. Upon completion of the installation, details are displayed showing which web applications Item Permission Batch has been installed to. Click **Close**.

2.4 Upgrade

Download the latest version of Item Permission Batch and run the **Setup.exe** file.

In the **Program Maintenance** window, select **Upgrade** and click **Next**.

2.5 Uninstallation

If you want to uninstall Item Permission Batch, double-click the **Setup.exe** file.

In the **Repair or Remove** window, select **Remove** and click **Next**. Then the application will be removed.

2.6 Command_Line Installation

The following instructions are for installing the solution files for Item Permission Batch in SharePoint 2016 by using the SharePoint STSADM command line tool

Required permissions

To use STSADM, you must be a member of the local Administrators group on the server.

To install Item Permission Batch to SharePoint servers.

- a. Extract the files from the product zip pack to a folder on one SharePoint server.
- b. Open a command prompt and make sure your path is set with the SharePoint bin directory.

- **SharePoint 2016**

C:\Program Files\Common Files\Microsoft Shared\Web Server Extensions\16\BIN

- c. Add the solution files to SharePoint in the STSADM command line tool.

```
stsadm -o addsolution -filename BoostSolutions.BatchPermissionSetup16.4.wsp
stsadm -o addsolution -filename BoostSolutions.FoundationSetup16.1.wsp
```

- d. Deploy the added solution with the following command:

```
stsadm -o deploysolution -name BoostSolutions.BatchPermissionSetup16.4.wsp -
allowgacdeployment -immediate

stsadm -o deploysolution -name BoostSolutions.FoundationSetup16.1.wsp -allowgacdeployment -
url [virtual server url] -immediate
```

- e. Wait for the deployment to complete. Check the final status of the deployment with this command:

```
stsadm -o displaysolution -name BoostSolutions.BatchPermissionSetup16.4.wsp
stsadm -o displaysolution -name BoostSolutions.FoundationSetup16.1.wsp
```

The result should contain a <Deployed> parameter for which the value is TRUE.

- f. In the STSADM tool, activate the features.

```
stsadm -o activatefeature -name SharePointBoost.BatchPermission -url [site collection url] -force
```

To remove Item Permission Batch from SharePoint servers.

- a. Removal is initiated with the following command:

```
stsadm -o retractsolution -name BoostSolutions.BatchPermissionSetup16.4.wsp -immediate
```

- b. Wait for the removal to finish. To check the final status of the removal you can use the following command:

```
stsadm -o displaysolution -name BoostSolutions.BatchPermissionSetup16.4.wsp
```

The result should contain the <Deployed> parameter for which the value is FALSE and the <LastOperationResult> parameter with the RetractionSucceeded value.

- c. Remove the solution from the SharePoint solutions storage:

```
stsadm -o deletesolution -name BoostSolutions.BatchPermissionSetup16.4.wsp
```

To remove BoostSolutions Foundation from SharePoint servers.

The BoostSolutions Foundation is designed to provide a centralized interface to manage licenses for all BoostSolutions software from within SharePoint Central Administration. If are still using BoostSolutions product on your SharePoint server, DO NOT remove Foundation from the servers.

- a. Removal is initiated with the following command:

```
stsadm -o retractsolution -name BoostSolutions.FoundationSetup16.1.wsp -immediate -url [virtual server url]
```

- b. Wait for the removal to finish. To check the final status of the removal you can use the following command:

```
stsadm -o displaysolution -name BoostSolutions.FoundationSetup16.1.wsp
```

The result should contain the <Deployed> parameter for which the value is FALSE and the <LastOperationResult> parameter with the RetractionSucceeded value.


- c. Remove the solution from the SharePoint solutions storage:

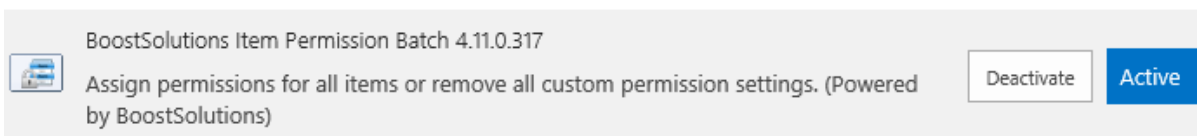
```
stsadm -o deletesolution -name BoostSolutions.FoundationSetup16.1.wsp
```

2.7 Feature Activation

Activate features in site collection

By default, the application's features are automatically activated once the product is installed by the setup program. You can also activate the product feature manually.

- a. Click **Settings**  and then click **Site Settings**
- b. Under **Site Collection Administration** click **Site collection features**.
- c. Find the application feature and click **Activate**. After a feature is activated, the Status column lists the feature as **Active**.



2.8 Installation FAQs

- **How do I activate this product?**

Please download the product and install it in SharePoint. Open the site collection in which you want to use the product, and login as the site collection administrator. Find the **Site collection features** in the site settings page, and then activate the product feature in the **Site Collection features** list page. After that you can use the product.

- **When installing the product, why do I receive an access denied error during the "system check step"?**

This is because you do not have permission to install the product. Please log in as administrator of the server and try again.

- **Why do I receive a "Security Exception" when installing the product?**

You do not have permission to access and make changes to your registry. Please login as administrator of the server and try again.

- **Why do I receive "the web.config is invalid on this IIS Web Site" error when installing the product?**

The installation program will check the web.config file. If the web.config is not in a standard format or is invalid for some reason, it will show this error.

If you don't need to install the add-ons in this web application, you can ignore it and check if these add-ons have been installed in other web applications. (If not, please re-install the add-on and don't select the invalid web application when installing.)

- **When I try to install, I get a "conflicting solution detected: BoostSolutions.xxx.wsp" error. What should I do?**

A "conflicting solution detected" error indicates that you have an older version of the same product installed (the product causing the error will be indicated by BoostSolutions.xxx.wsp). To resolve this error, retract the solution using the previous major version of the BoostSolutions product installer (available here), and then install the latest version of the product using the most recent installer. Your original settings will not be affected.

NOTE: If you are using an old version of the product and you received the formal license code from SPB on or before December 2009, you will need to contact sales@boostsolutions.com for a license compatibility upgrade. This upgrade is required for the software to function. This upgrade is FREE OF CHARGE.

- **Why does an update conflict occur when installing a product?**

The error may be caused by the conflict between the installation and auto backup. Stop the automatic backup in the central administration, then install the program again, or install the product when there is no backup in progress.

You can deploy the solution manually by following these steps:

- a. In Central Administration, on the Home page, click **System Settings** section.
- b. In the Farm Management section, click **Manage farm solutions**.

- c. On the Solution Management page, click the link of the product you want to install (e.g., "boostsolutions.sharepoint.xxx.wsp").
- d. On the Solution Properties page, click **Deploy Solution**.
- e. On this page, choose the web application in the **Deploy To** section, and then click **OK**.

Then the solution will be deployed on the specified web application manually.

- **I get an "Http-Exception for file does not exist" error when installing the product. How can I resolve this?**

The cause of the problem may be that the setup files have not been deployed on the appropriate web applications. To resolve this, uninstall the product, and then reinstall it making sure that the web applications are selected on the "Deployment Targets" page during the installation.

- **After a product is successfully installed on the server, why can't I see the feature in the place where it is supposed to be?**

Please check if you have activated the feature in **Site Collection feature** list. To learn more about how to activate the feature, please refer to the **How do I activate this product**.

- **Should I remove the application before installing a new version? Should I acquire another license key?**

You don't need to uninstall the software when upgrading to a new version, and you don't need another license.

- **Do I need to reboot the server or IIS after installing the product?**

You don't need to reboot server or IIS after installing the product.

- **When I try to install your product, I get a 'Cannot add/remove the specified assembly to the global assembly cache' error. What should I do?**

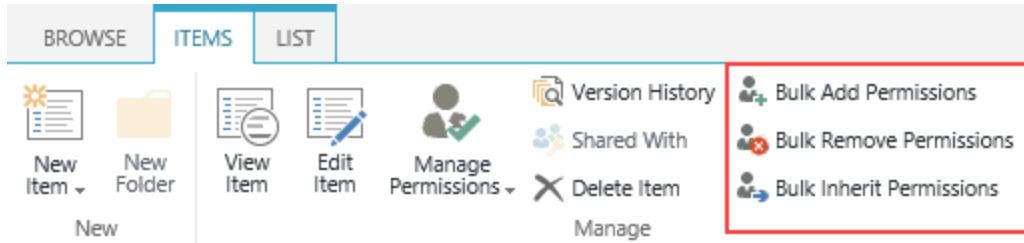
This error indicates that some product assembly files are locked on SharePoint servers. Try the following methods to fix this error:

- Restart IIS on all SharePoint servers
- Restart timer job services on all SharePoint servers
- If the above methods do not work, try unlocking the assembly files on the server.

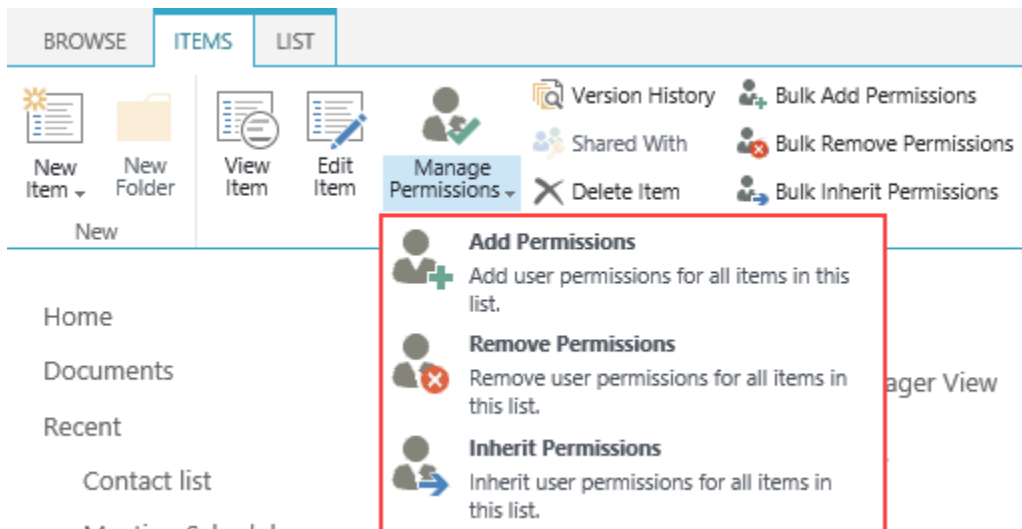
After the above methods have been tried, reinstall the product.

3. Manage Items Permissions

Once Item Permission Batch features are activated in site collection, the product commands will be available in the list or library ribbon.



- Bulk Add Permissions
Grant permissions to specific users/groups for selected items or folders.
- Bulk Remove Permissions
Remove specific users/groups' permissions for selected items or folders.
- Bulk Inherit Permissions
Inherit permissions from the list for selected items or folders.



- Add permissions
Grant permissions to specified users/groups on all items or folders in the current list.
- Remove permissions
Remove specified users/groups' permissions on all items or folders in the current list.

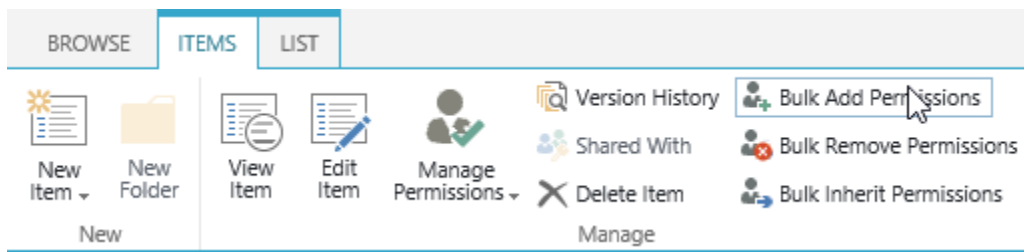
- Inherit permissions
Inherit permissions from the list for all items or folders in the current list.

Note

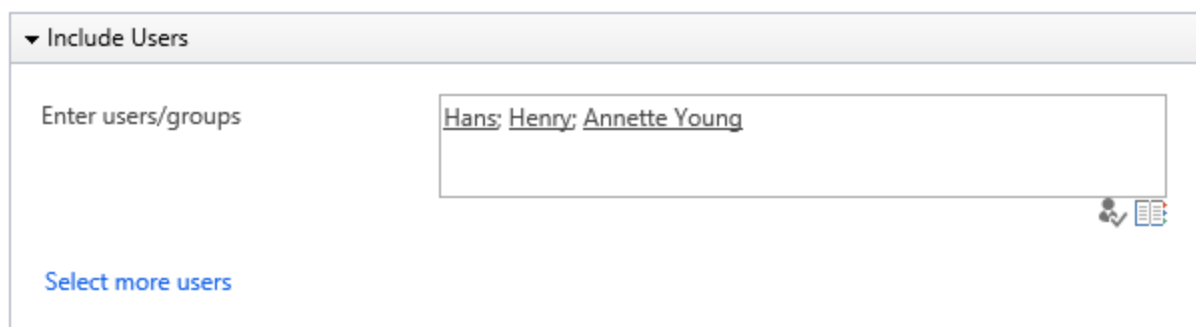
To manage permissions on items or folders, you must have the **Manage Permissions** permission for these items or folders.

3.1 Bulk Assign Permissions

- Navigate to the list or library where you want to manage permissions.
- Select the target items or folders in the list, and click **Bulk Add Permissions** in the Manage group on the ribbon.




- On the **Bulk Add Permissions** page, enter the users or groups names in the **Include Users** section.

A screenshot of the 'Include Users' section in the Bulk Add Permissions page. The section has a title bar with a dropdown arrow and the text 'Include Users'. Below the title bar is a text input field with the placeholder text 'Enter users/groups'. The input field contains the text 'Hans; Henry; Annette Young'. To the right of the input field is a small icon representing a list of users. Below the input field is a blue link that says 'Select more users'.

- In the **Permission Settings** section, select the permission level(s) you want to grant to users.

▼ Permission Settings

Condition

 Edit

Select Permission Levels

Full Control - Has full control.

Design - Can view, add, update, delete, approve, and customize.

Edit - Can add, edit and delete lists; can view, add, update and delete list items and documents.

Contribute - Can view, add, update, and delete list items and documents.

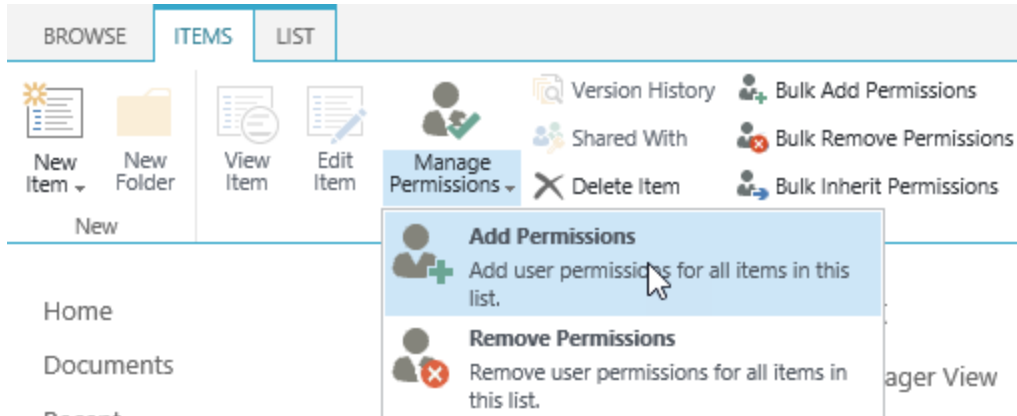
Read - Can view pages and list items and download documents.

View Only - Can view pages, list items, and documents. Document types with server-side file handlers can be viewed in the browser but not downloaded.

- e. Click **OK** to grant permissions.

3.2 Assign Permissions to All Items

- a. Navigate to the list or library where you want to manage permissions.
- b. Without selecting items or folders, click **Add Permissions** in the Manage group on the ribbon.

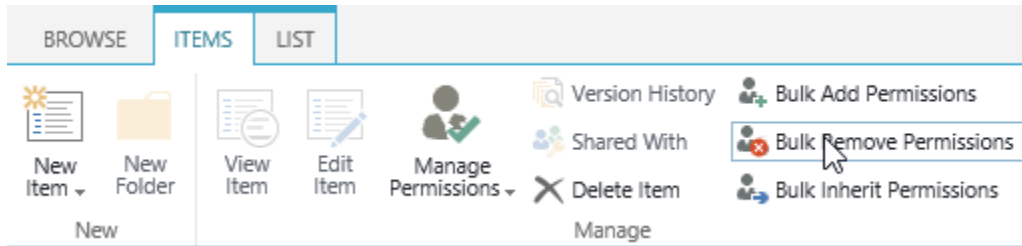


- c. On the **Add Permissions** page, enter the users or groups names in the **Include Users** section.
- d. In the **Permission Settings** section, select the permission level(s) you want to grant to users.
- e. Click **OK** to grant permissions. You will notice that all items and folders contained in this list have been granted permissions.

3.3 Bulk Remove Permissions

- a. Navigate to the list or library where you want to manage permissions.

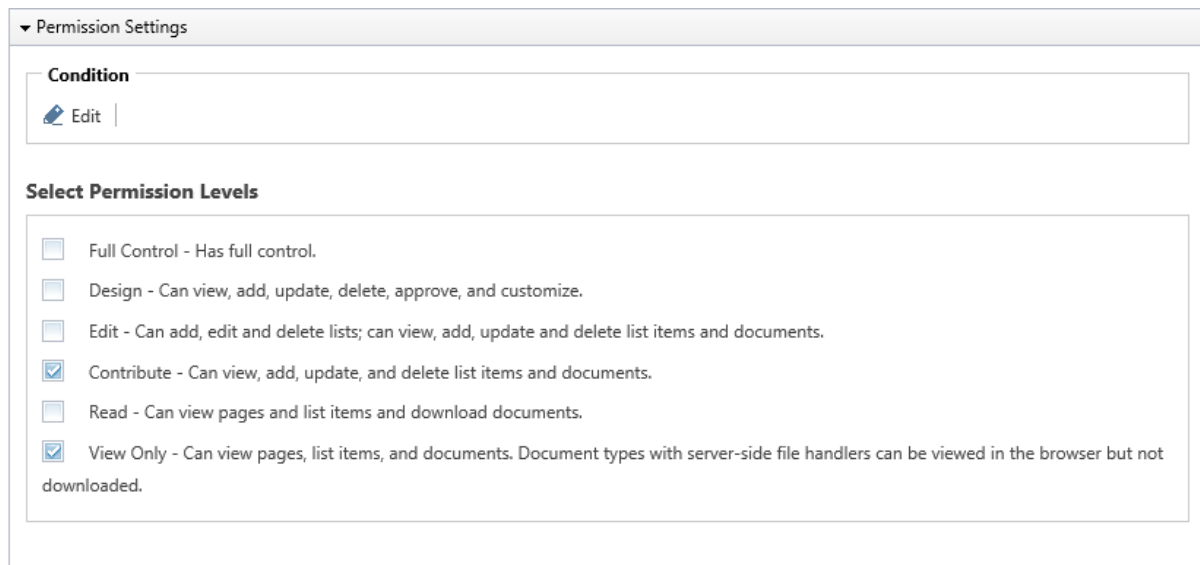
- b. Select the target items or folders in the list, and click **Bulk Remove Permissions** in the Manage group on the ribbon.



- c. On the **Bulk Remove Permissions** page, enter the users or groups names in the Include Users section.

A screenshot of the 'Bulk Remove Permissions' page, specifically the 'Include Users' section. The section has a dropdown arrow on the left. Below the header, there is a text input field with the placeholder text 'Enter users/groups'. The field contains the text 'Annie Walker; Claus Kong'. To the right of the input field are two small icons: a checkmark and a list icon. Below the input field is a blue link that says 'Select more users'.

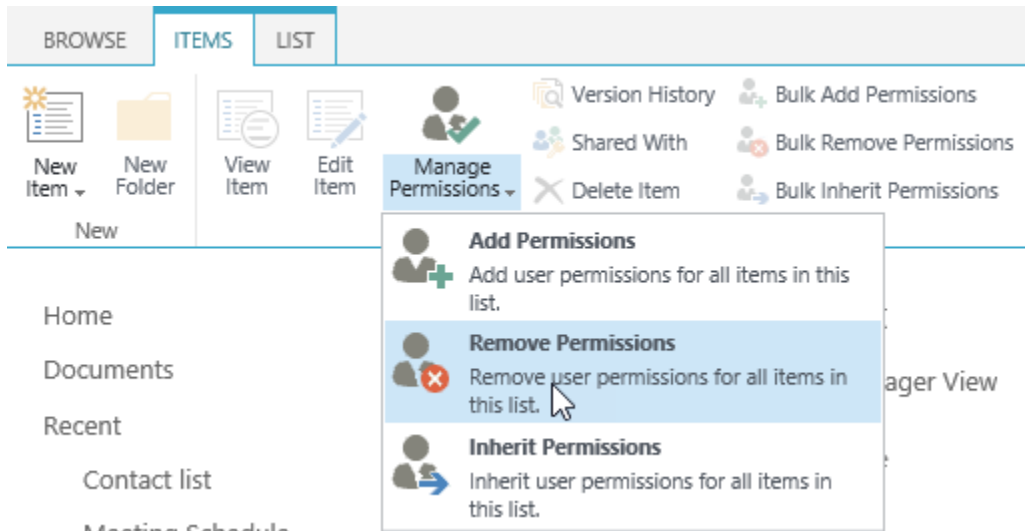
- d. In the **Permission Settings** section, select the permission level(s) you want to remove from users.
To remove all permissions, select all the listed permission levels.

A screenshot of the 'Bulk Remove Permissions' page, specifically the 'Permission Settings' section. The section has a dropdown arrow on the left. Below the header, there is a 'Condition' section with an 'Edit' button. Below that is the 'Select Permission Levels' section, which contains a list of permission levels with checkboxes. The 'Contribute' and 'View Only' levels are selected. The list includes: 'Full Control - Has full control.', 'Design - Can view, add, update, delete, approve, and customize.', 'Edit - Can add, edit and delete lists; can view, add, update and delete list items and documents.', 'Contribute - Can view, add, update, and delete list items and documents.', 'Read - Can view pages and list items and download documents.', and 'View Only - Can view pages, list items, and documents. Document types with server-side file handlers can be viewed in the browser but not downloaded.'

- e. Click **OK** to remove permissions.

3.4 Remove Permissions from All Items

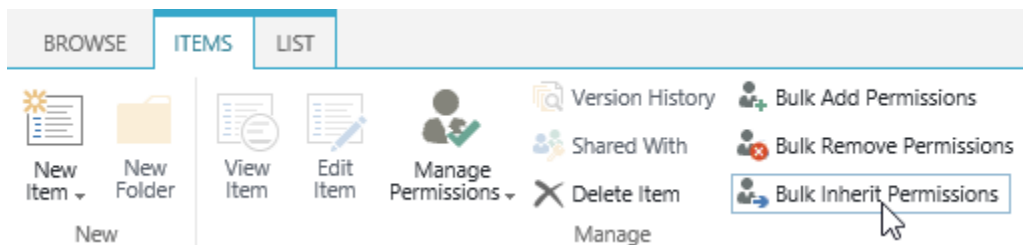
- To remove users or groups permissions from all items or folders, navigate to the list or library where you want to manage permissions.
- Without selecting items or folders, click **Remove Permissions** in the Manage group on the ribbon.



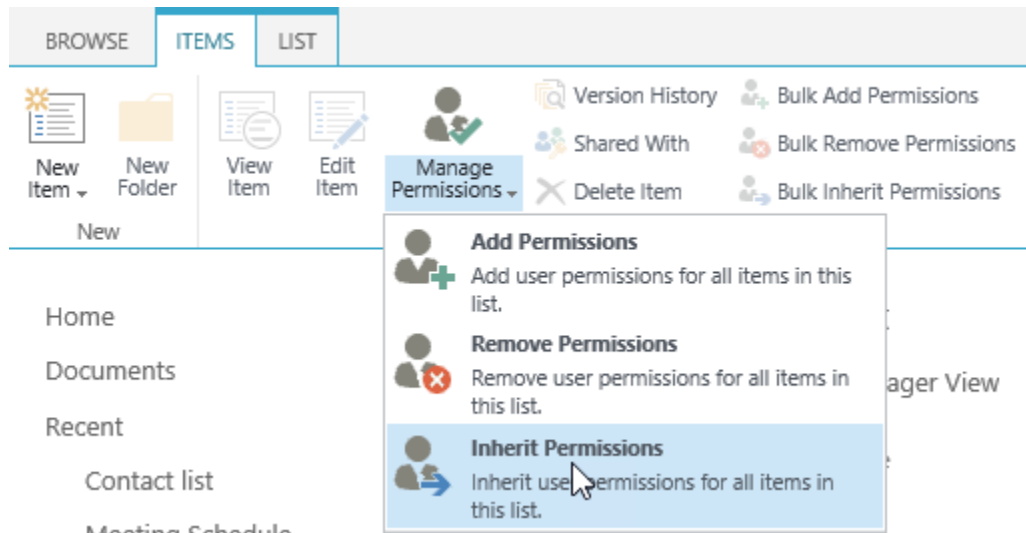
- On the **Remove Permissions** page, enter the users or groups names in the **Include Users** section.
- In the **Permission Settings** section, select the permission level(s) you want to remove from users.
To remove all permissions, select the all listed permission levels.
- Click **OK** to start removing permissions. The specified users or groups' permissions will be removed from all items and folders.

3.5 Inherit Permissions from List

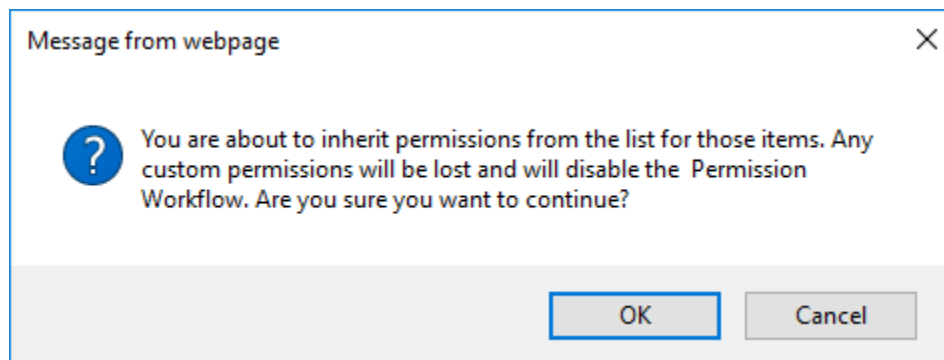
- Navigate to the list or library where you want to manage permissions.
- Select the target items or folders in the list, and click **Bulk Inherit Permissions** in the Manage group on the ribbon.



If you want all items or folders to inherit permissions from the parent list, just click **Inherit Permissions** in the Manage group on the ribbon.



- c. A message box will appear asking you to confirm that you want to proceed with this operation.



Note

If you add a permission workflow on this list, this operation may cause the permission workflow to be disabled.

- d. This function will cause custom permission settings to be lost for the selected items. Click **OK** to confirm and inherit permission settings from list.

3.6 Assign Permission to Specific Users

To grant access to specific users and groups, in the **Include Users** section, enter the users or groups' names. You can enter any user or group name in the people picker box. Multiple entries are separated with a semicolon.

▼ Include Users

Enter users/groups

Annie Walker; Claus Kong

[Select more users](#)

3.7 Assign Permission to Users Dynamically

Assign Permissions to User Columns to Current or Related List

You may need to give users or groups' permission dynamically instead of specifically, for instance you may need to use the 'Assign to' to assign permissions to users so they can access their tasks.

Item Permission Batch allows you to assign permissions to users or groups based on user/group columns.

You can implement it as follows:

- a. In the Bulk Add Permissions page, click **Select more users** in the Include Users section.
- b. In the Choose User/Group Columns section, select one or more user or group columns in the current list.

Choose User/Group Columns

Show user/group columns in other lists related to lookup columns in this list

- Assigned To
 - Created By
 - Modified By

- c. To give permissions to user or group columns in the lookup list, choose the **Show user/group columns in other lists related to lookup columns in this list** option. Columns will be shown as List.Column format.

Choose User/Group Columns

 Show user/group columns in other lists related to lookup columns in this list

<input checked="" type="checkbox"/>	Assigned To
<input type="checkbox"/>	Created By
<input type="checkbox"/>	Modified By
<input checked="" type="checkbox"/>	Predecessors.Assigned To
<input type="checkbox"/>	Predecessors.Created By
<input type="checkbox"/>	Predecessors.Modified By

d. Select the user or group columns from the lookup list.

Assign Permissions to User Columns in External List

This feature offers a method when you need to assign permissions to filter users or groups based on conditions. For example, you may only want users whose job title is manager to approve requests.

To complete this feature:

- In the Bulk Add Permissions page, click **Select more users** in the Include Users section.
- In the Choose User/Group Columns section, click **Choose User/Group Columns from Another List**.

Choose User/Group Columns from Another List

User/Group Columns	Condition
--------------------	-----------

There are no user/group columns chosen from other lists.

c. Select the site and list, then select the user or group columns.


The dialog box is titled "Choose User/Group Columns from Another List". It features two dropdown menus at the top: "Site" set to "BoostSolutions" and "List" set to "HR Information". Below these is a section titled "Select user/group columns" containing three checkboxes: "Account Name" (checked), "Created By", and "Modified By". A text area labeled "Condition (Enter a condition to determine the users or groups to which the permissions will be assigned)" contains the word "Condition" and an "Edit" button with a pencil icon. At the bottom right are "OK" and "Cancel" buttons.

- d. Click the Edit command to open the Condition editor. Specify the conditions to filter users or groups.

The dialog box is titled "Condition". It has a "Condition Type" dropdown menu set to "Basic". The main area displays a condition: "And" followed by "[(HR Information).Department] is equal to HR" with a close button (X) to the right. At the bottom right are "OK" and "Cancel" buttons.

- e. Click **OK** to save the conditions.

The configuration is set as follows:

 Choose User/Group Columns from Another List

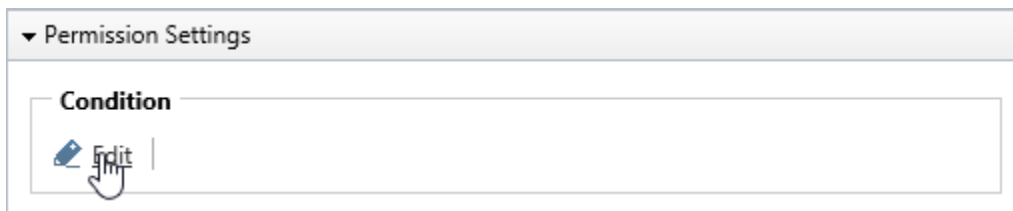
User/Group Columns	Condition	Actions
Site: BoostSolutions List: HR Information User Columns: Account Name	[[HR Information).Department] == "HR"	<input type="button" value="Edit"/> <input type="button" value="Delete"/>

3.8 Assign Permissions According to Metadata

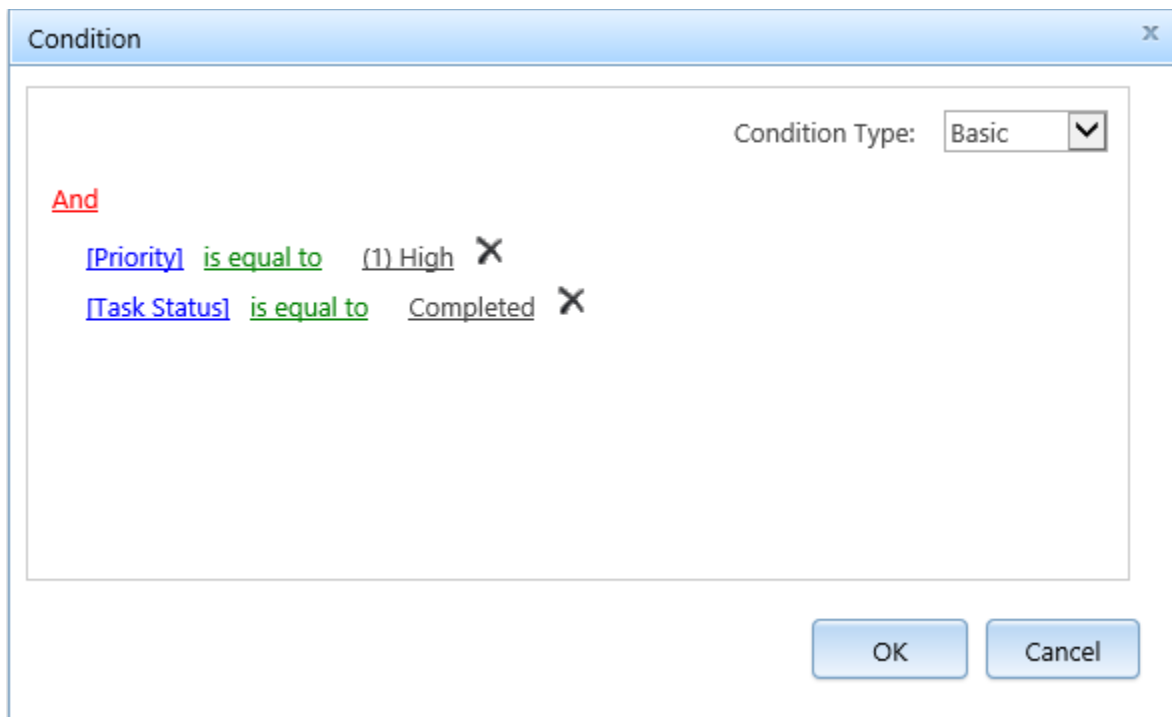
By setting a proper condition, you can govern items or documents permissions according to metadata.

Here is how to configure a condition in the permission part.

- In the Bulk Add Permissions page, click **Edit** in the Permission Settings section.



- In the Condition editor, compose the condition with metadata.



Two conditions types are provided in the settings page, Basic and Advanced.

Basic conditions help administrators to easily configure conditions.

Advanced conditions provide more operators and functions to implement elaborate conditions beyond what is found in basic conditions.

For further information, please refer to the [Condition Editor User Guide](#).

- c. Click **OK** to save the conditions.
- d. Select the permission level(s) you want to assign to users.

Select Permission Levels

<input type="checkbox"/>	Full Control - Has full control.
<input type="checkbox"/>	Design - Can view, add, update, delete, approve, and customize.
<input type="checkbox"/>	Edit - Can add, edit and delete lists; can view, add, update and delete list items and documents.
<input checked="" type="checkbox"/>	Contribute - Can view, add, update, and delete list items and documents.
<input type="checkbox"/>	Read - Can view pages and list items and download documents.
<input type="checkbox"/>	View Only - Can view pages, list items, and documents. Document types with server-side file handlers can be viewed in the browser but not downloaded.

- e. Click **OK**.

4. Troubleshooting & Support

Troubleshooting FAQ:

<http://www.boostsolutions.com/general-faq.html#Show=ChildTitle9>

Contact Info:

Product & Licensing Inquires: sales@boostsolutions.com

Technical Support (Basic): support@boostsolutions.com

Request a New Product or Feature: feature_request@boostsolutions.com

Live chat:

<http://www.boostsolutions.com/support/chat/livezilla.php?intgroup=U3VwcG9ydA==&reset=true>

Appendix 1: License Management

You can use Item Permission Batch without entering any license code for a period of 30 days from when you first use it.

To use product after expiration, you will need to purchase a license and register the product.

Finding License Information

- a. In the products main page, click the **License Management** link, enter the License Management Center.
- b. Click Download License Information, choose a license type and download the information (Server Code, Farm ID or Site Collection ID).

Download License Information ✕

Download the license type information and send to sales@boostsolutions.com to get license.

Choose a license type

Server License
Server Code: 8fa4fcbbeab9475d8b8f10d2c7b27e1e982261612
75d49c683442a828de45bdd

Farm License
Farm ID: {8fa4fcbbeab9-475d-8b8f-10d2c7b27e1e}
Number of Users: 43 user(s)

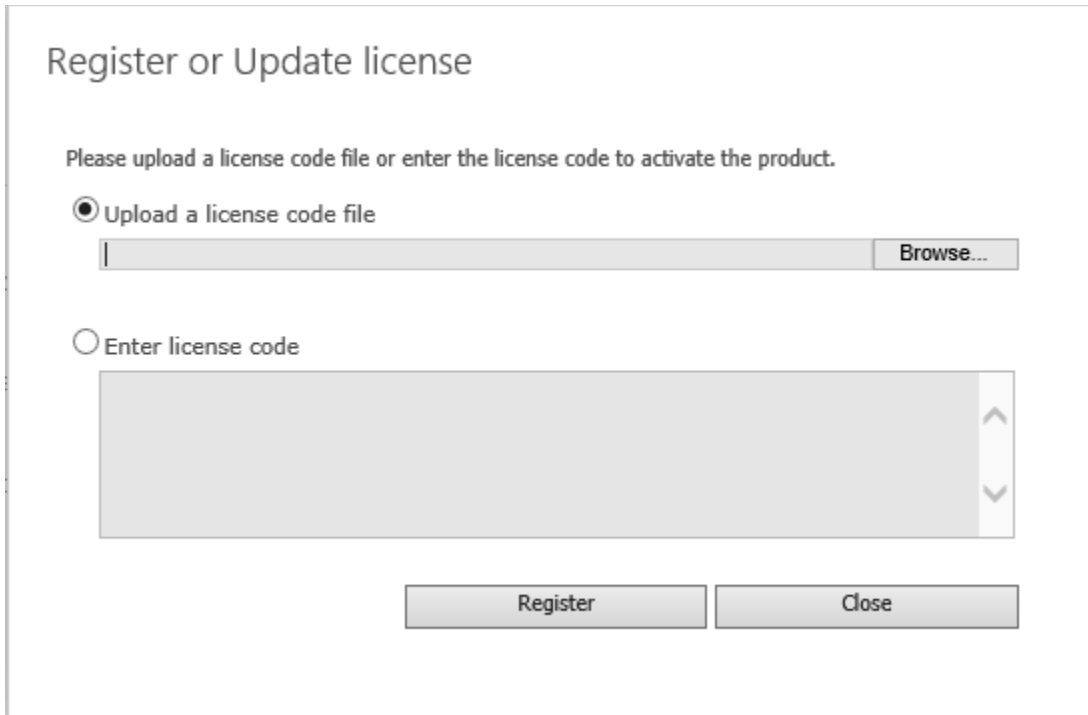
Site Collection License
Site Collection ID: Select a site collection
Site Collection:

In order for BoostSolutions to create a license for you, you MUST send us your SharePoint environment identifier (Note: different license types need different information). A server license needs a server code; a Farm license needs a farm ID; and a site collection license needs a site collection ID.

- c. Send the above information to us (sales@boostsolutions.com) to generate a license code.

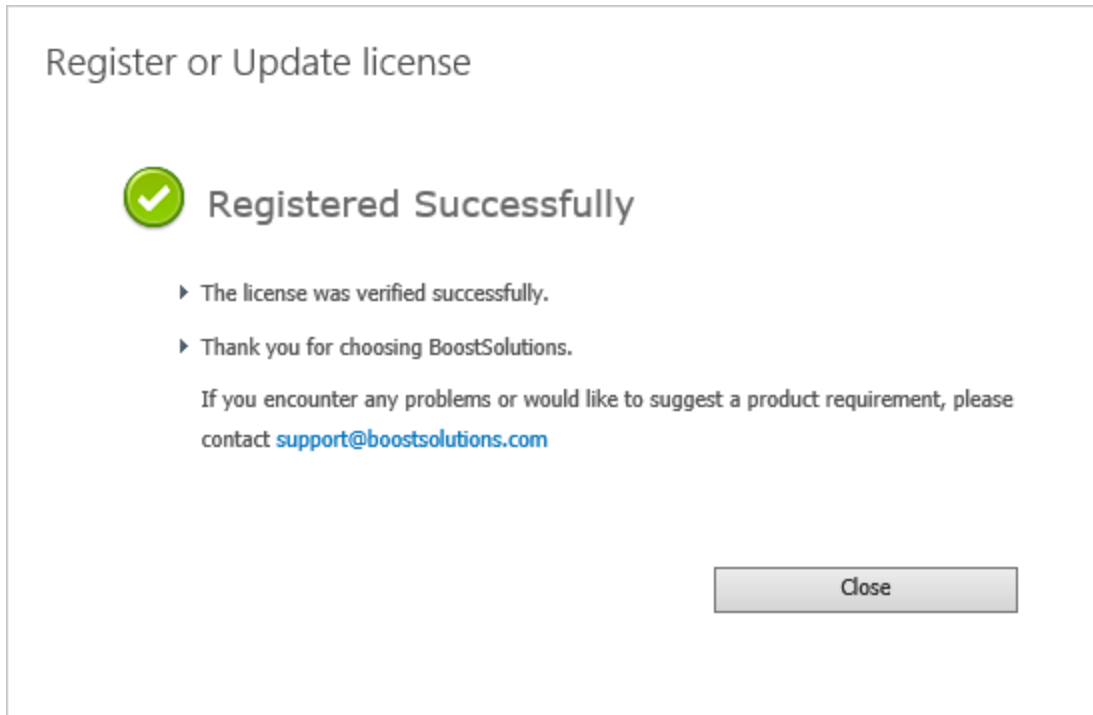
License Registration

- a. When you receive a product license code, enter the **License Management Center** page.
- b. Click **Register** on the license page and a **Register or Update license** window will open.



The screenshot shows a dialog box titled "Register or Update license". Inside the dialog, there is a prompt: "Please upload a license code file or enter the license code to activate the product." Below this prompt are two radio button options. The first option, "Upload a license code file", is selected. It is followed by a text input field and a "Browse..." button. The second option, "Enter license code", is unselected and is followed by a large text input area with a vertical scrollbar on the right side. At the bottom of the dialog, there are two buttons: "Register" and "Close".

- c. Upload the license file or enter the license code and click **Register**. You will get confirmation that your license has been validated.



For more details on license management, see the [BoostSolutions Foundation](#).