

SharePoint AD Information Sync Installation Instruction

System Requirements

Microsoft Windows SharePoint Services V3 or Microsoft Office SharePoint Server 2007.

License management

Click the trial link on the AD Information Sync Settings page to get to the license management page.

AD Information Sync Settings

Configure your active directory synchronization settings.

You are using a trial license for SharePoint AD Information Sync (30 days left), please click here to manage license

Sync Profiles

A sync profile stores configuration for synchronization from Active Directory to SharePoint list. The following profiles are currently available in this site.

Profile Name	Active Directory	List	Schedule Type
--------------	------------------	------	---------------

[Add Profile](#)

License Management

Manage license for SharePoint AD Information Sync.

[Click here to enter license management page.](#)

SharePoint AD Information Sync License Management

License information and add new license

SharePoint AD Information Sync
Sync information from active directory to SharePoint list.

License Information

Farm ID: {87b36d9e-c2a2-4fd2-90fe-17928ef24f7e}

Site Collection ID: 4b29d754-abb0-4b20-801e-7a1e75e9f644

Current amount of users in this site collection: 12

License status: **No Registration**

Add license(ASCII): [Click here to get license](#)

[OK](#)

In the License Management page, click the link to purchase the license and send the Site Collection ID or Farm ID to sales@sharepointboost.com

SharePoint AD Information Sync License Management

License information and add new license

SharePoint AD Information Sync Sync information from active directory to SharePoint list.	License Information Farm ID: {87b36d9e-c2a2-4fd2-90fe-17928ef24f7e} Site Collection ID: 4b29d754-abb0-4b20-801e-7a1e75e9f644 Current amount of users in this site collection: 12 License status: 50 Add license(ASCII): Click here to get license
---	---

```
ecb0636d-be34-42e4-a114-f06a8dc68441h6PL1dGdb+FilffaXOPM5ubHGAZIMTXU6CygDnt6W1qZ041vOPJaxXD68y4Uy1WvxgYr9XQ268ppylmZ+b5VFKRpGHn83px+8KrFCEcgSBhresbAaP+pPuMBPI/Rezkc3efNduEj7yi1Do0w1+r2MhN3w2aiK7jVV/+EVXbw1I=G1OK1c2PyNjCMBZRVubnzbCj6e/B/Gpzx60DRuAY17IGagstYyIb0fAg9IDwGIV0i4p4e6kaUo4pOdoq08+EVzI+9zPotBOncOrK3NT1THRhiFHMrdWgZwG/7vWYBFRfkcAzTw8BQp2WH95RqGJmTH60t0YXihsbGnZ92ThFGj2XhJJSSxgCJlby8uw tWF96xQDemJv9hzZVM8Z9p2xbkR9NXQ5v/nR/Ralf13HxcAW09V2RChfwOqMetwSBi6XwHIVQbdhY11Zk/DsAMhA9bl18rDOu73V8xZLUTSLYyA6Aka mvclmmtPoy/JwVjbgWyGzJaSQbl9X3bzt+Iop4DJPffFOPRqai1ACB1BMrL3i0+aZO1htu bmvfqaIoY/UXAbsuPoPZFrVgxCC8GumMUT+Wjxi1sUXAbsuPoPZFP64CfdgsFYnq70Uf99LotyNxxXbTXwGzbZTqZKzKt9 qSXUrbISxq1/DwBGMjDN5uAEqwtbORam/t8agzyNKb+z5GNFKSh8rfusgRcTfs1FYMZvK6qkz7oA+ivGYISAG6Jt8K4Pmb +h6h8HyUoqfX2ld9eTwlGH1u7WkOH3DlyHhqZudawDzJ5MpmPzqGgK38EBuXBZXLHqK0a01h0CPZW4PV6V/rs/31D
```

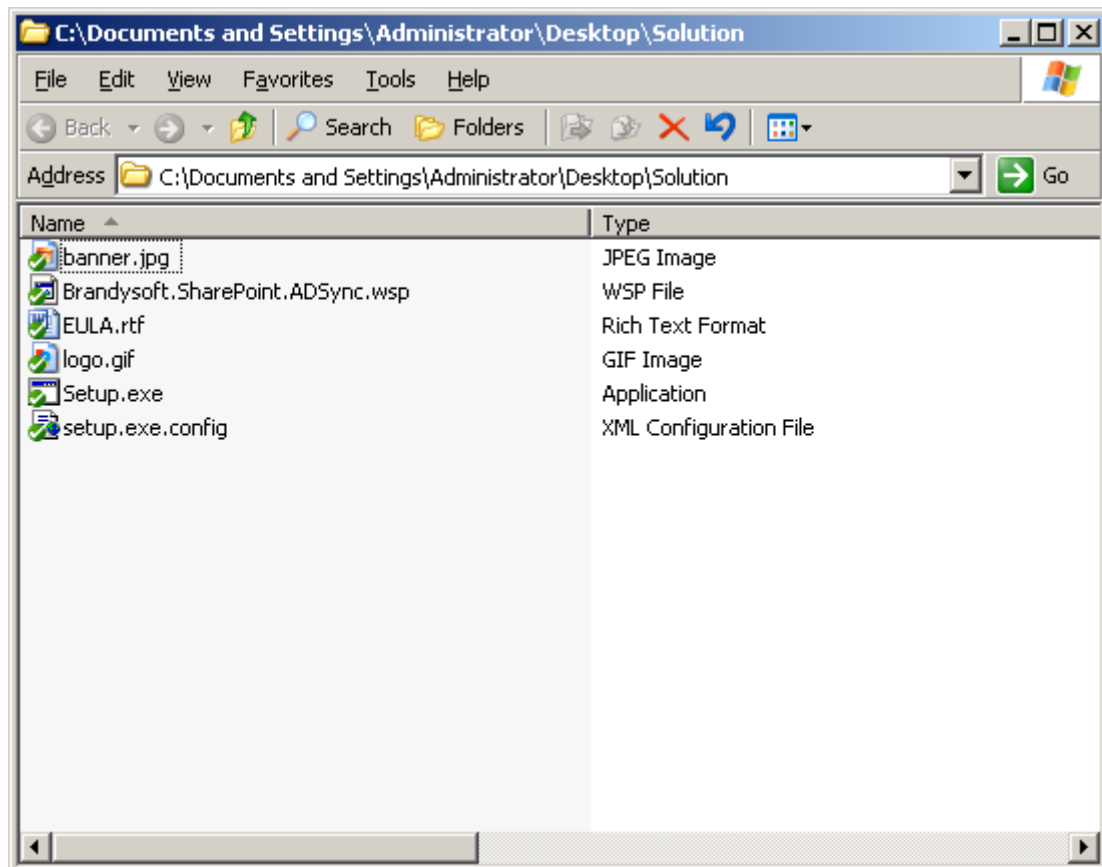
You license has been validated, Please switch to previous page and Refresh(F5) it

OK

Now, close this page and refresh the previous page, you can use the SharePoint Password Change with no limitation.

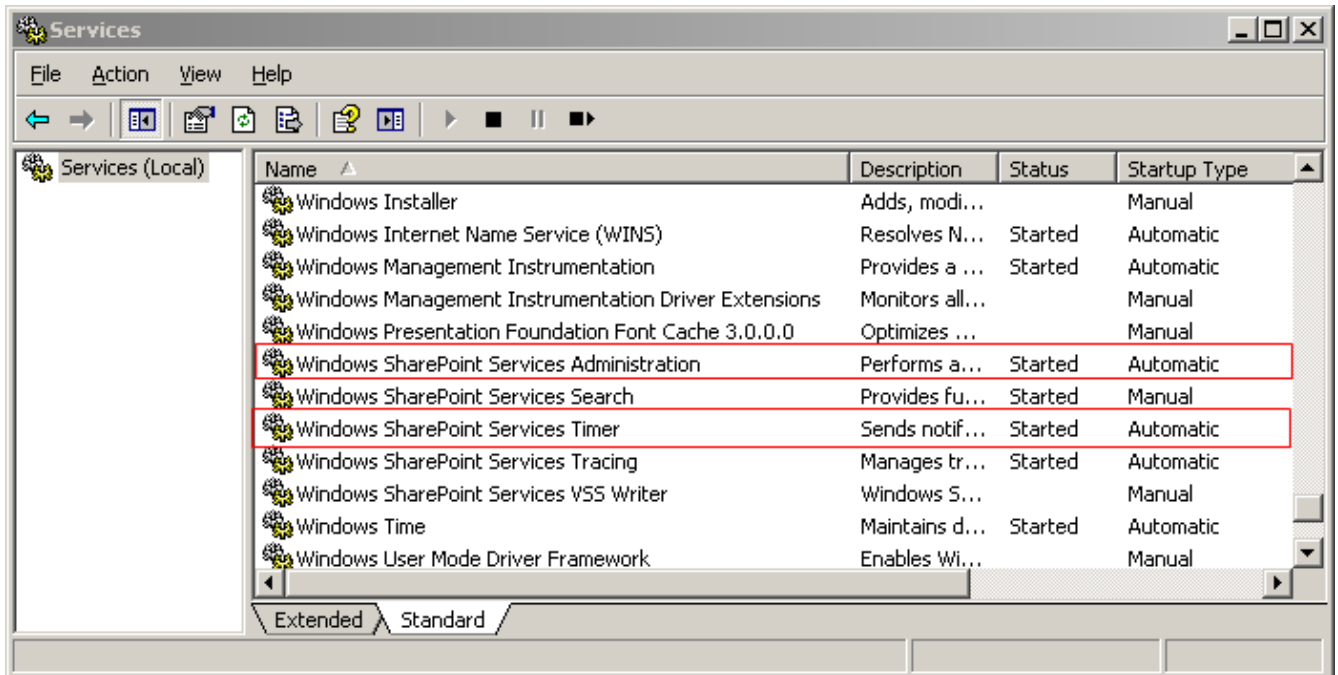
Installation

Download SharePoint AD Information Sync setup file from <http://www.sharepointboost.com>, release the file to a folder, and run "setup.exe".

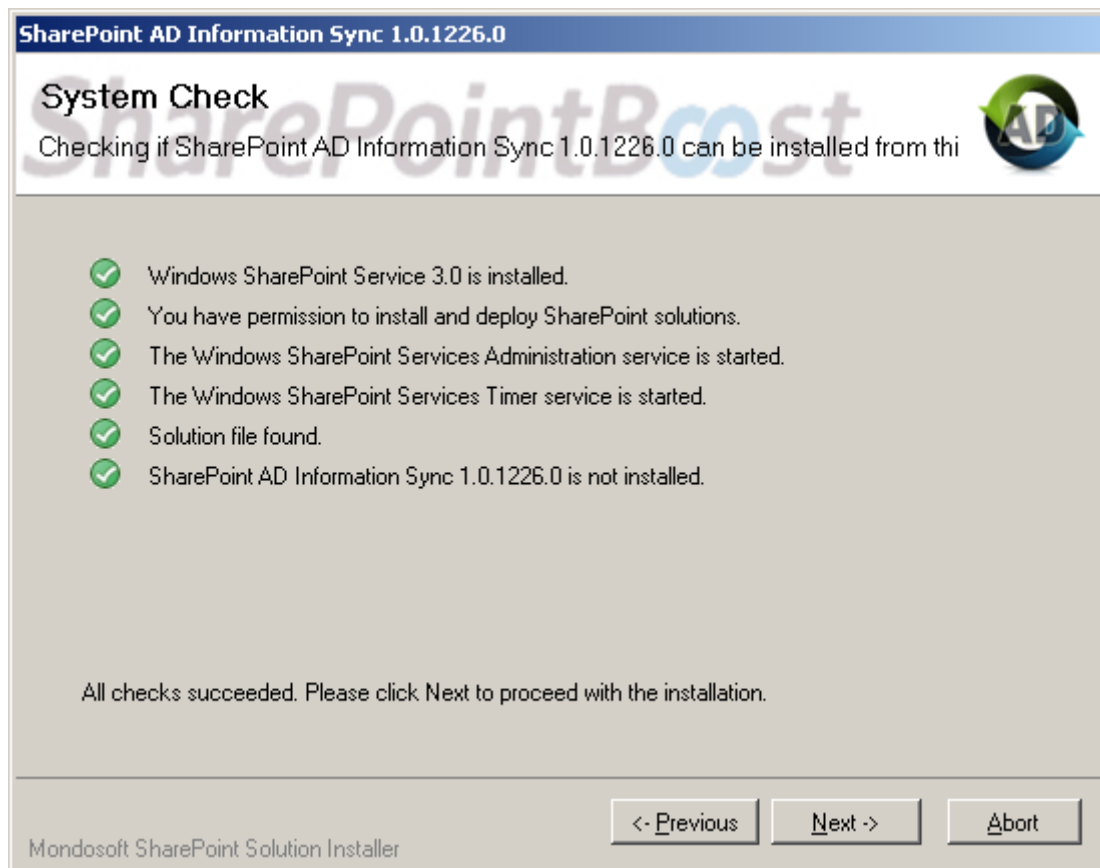


Note:

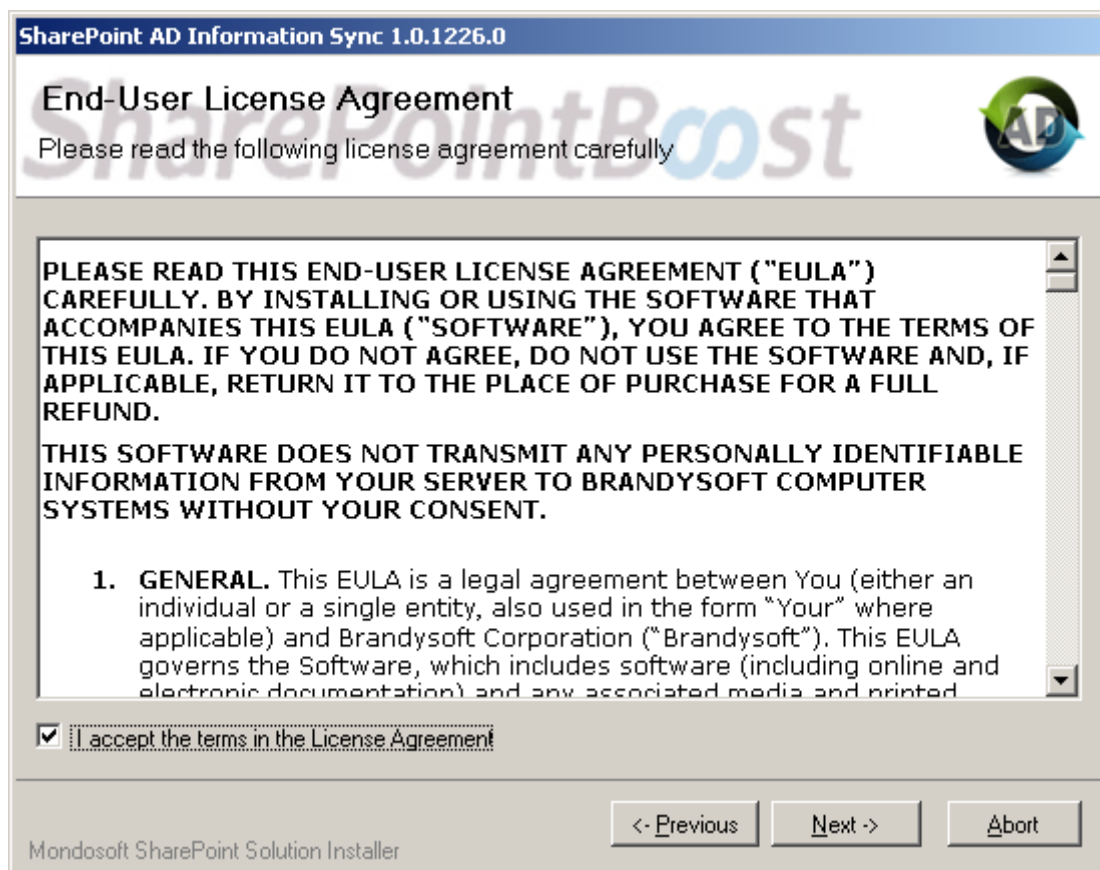
You must be the SharePoint Farm Administrator; start “Windows SharePoint Services Administration” and “Windows SharePoint Services Timer” in services management prior to installation.



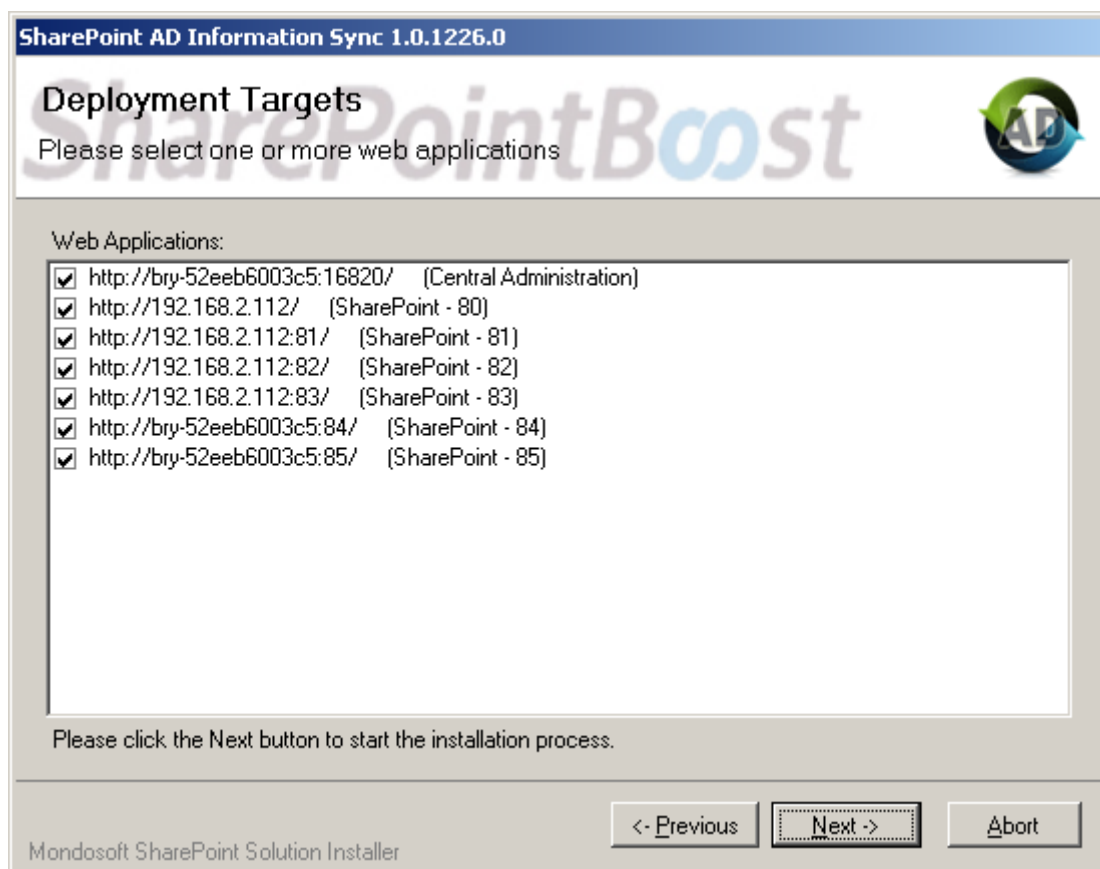
Run the setup file, and wait a few seconds for system check, then click “next”.



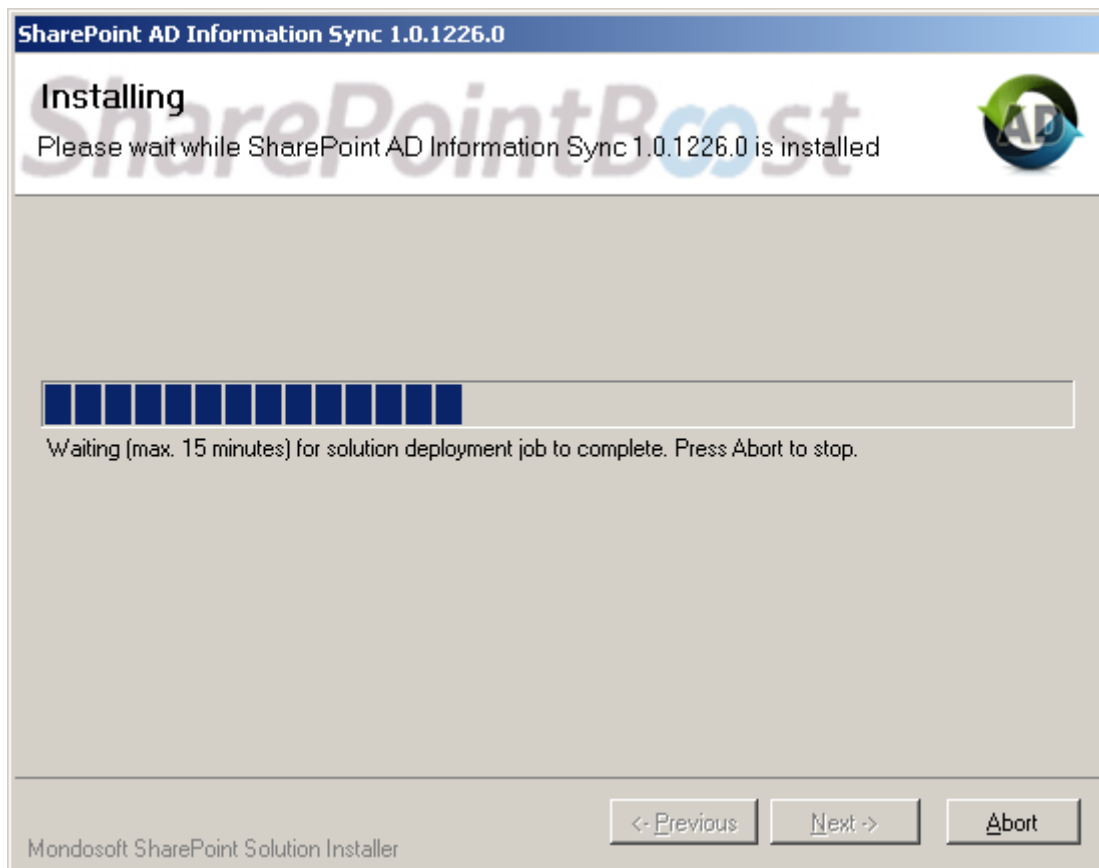
After you have read and accepted the License Agreement, please click “next”.



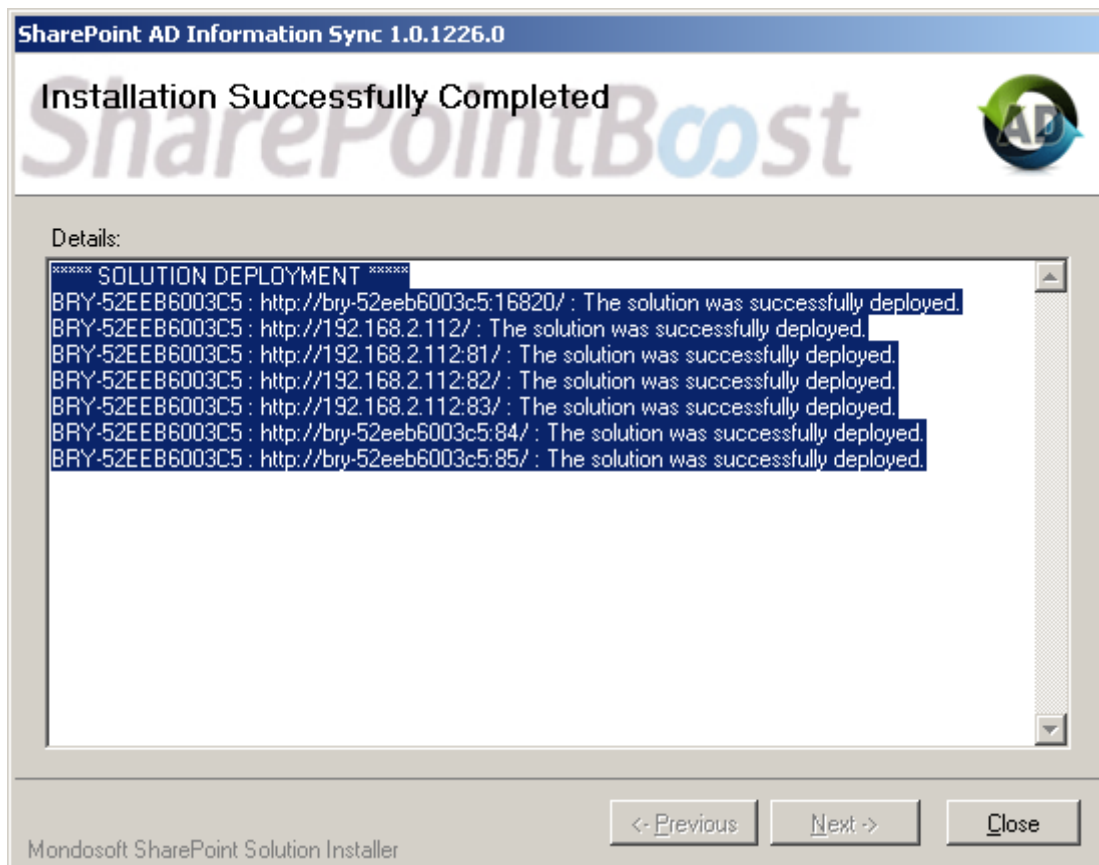
Please select one or more web application and click "Next".



Wait for installing, and then click "next" for more deployment details.



Details are displayed, showing SharePoint AD Information Sync is installed on which web applications.



Activate and Use:

First, open SharePoint 3.0 Central Administration, on the top navigation bar, click Application Management. Then in the SharePoint Web Application Management section, click Manage Web Application Features.

Central Administration > Application Management

Application Management

This page contains links to pages that help you configure settings for applications and components that are installed on the server

SharePoint Web Application Management

- [Create or extend Web application](#)
- [Remove SharePoint from IIS Web site](#)
- [Delete Web application](#)
- [Define managed paths](#)
- [Web application outgoing e-mail settings](#)
- [Web application general settings](#)
- [Content databases](#)
- [Manage Web application features](#)
- [Web application list](#)






In the Manage Web Application Features page, click "Activate" button of SharePoint AD Information Sync Timer Job.

Central Administration > Application Management > Manage Web Application Features

Manage Web Application Features

This page allows you to manage web application features.

Web Application: <http://192.168.2.112:81/>

Name	Status
 Office Server Enterprise Search Uses the Office Server Search Service for search over broad enterprise content. In addition to list and site scopes, provides search over people profiles, business data, remote and custom content sources. Uses multiple tabs to display results in the Search Center.	Deactivate Active
 Office Server Site Search Uses the Office Server Search Service for site and list scoped searches.	Deactivate Active
 Office SharePoint Server Enterprise Web application features Features such as the business data catalog, forms services, and Excel Services, included in the Office SharePoint Server Enterprise License	Deactivate Active
 Office SharePoint Server Standard Web application features Features such as user profiles and search, included in the Office SharePoint Server Standard License	Deactivate Active
 SharePoint AD Information Sync Timer Job Add or delete timer job for SharePoint AD Information Sync.	Activate

Note: Change Web Application to which you want to apply AD Information Sync.

Click Operations on the top navigation bar, in the Global Configuration section, click Timer job definitions.

SharePointBoost AD Information Sync Job is in this page.

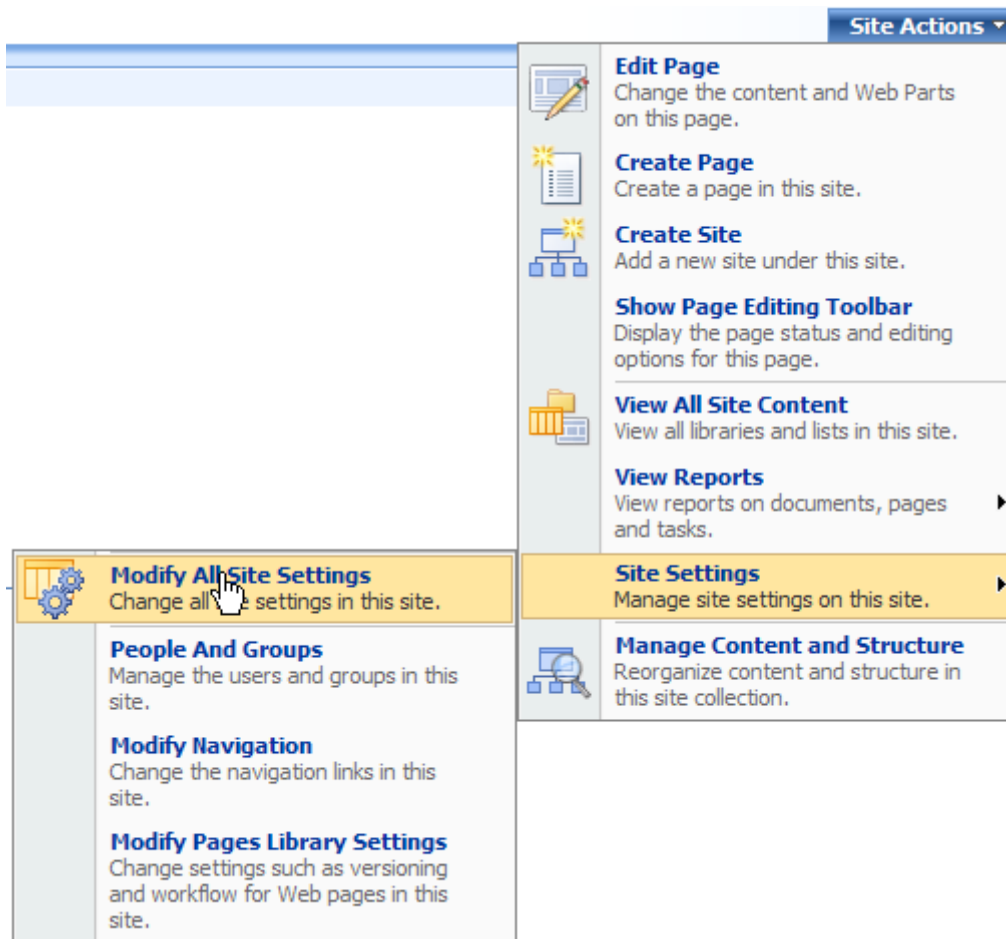
Shared Services Timer Job	N/A	Minutes
SharePoint Services Search Refresh	N/A	Minutes
SharePointBoost AD Information Sync Job	SharePoint - 80	Minutes
Sku Type Synchronization Job	N/A	Hourly
Synchronization Scheduler	N/A	Minutes

Click Operations on the top navigation bar, in the Global Configuration section, click Timer job status.

You can check the timer job running status.

Shared Services Provider Synchronizing Job	BRY-52EEB6003C5	Succeeded	100%	1/6/2009 4:10 PM
Shared Services Timer Job	BRY-52EEB6003C5	Succeeded	100%	1/6/2009 4:10 PM
SharePoint Services Search Refresh	BRY-52EEB6003C5	Succeeded	100%	1/6/2009 4:10 PM
SharePointBoost AD Information Sync Job	BRY-52EEB6003C5	Succeeded	100%	1/6/2009 4:10 PM
Sku Type Synchronization Job	BRY-52EEB6003C5	Succeeded	100%	1/6/2009 4:00 PM
Synchronization Scheduler	BRY-52EEB6003C5	Succeeded	100%	1/6/2009 4:00 PM

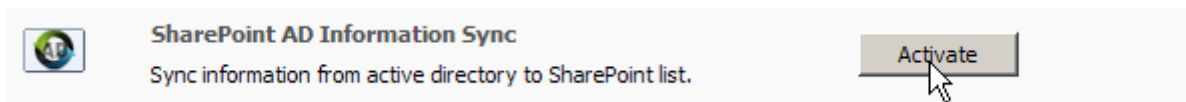
Then, click **Site Actions** (siteactions_menu.jpg) (SharePoint AD Information Sync site action menu), and select Modify All Site Settings.



In the Site Settings page, click “Site collection features”.



In the Site collection features list, click "Activate" button of SharePoint AD Information Sync.



After SharePoint AD Information Sync activated, open the site which you want to configure the AD Information Sync, on the Site Actions menu, click Site Settings, and then you will find AD Information Sync Settings in the Site Administration section.

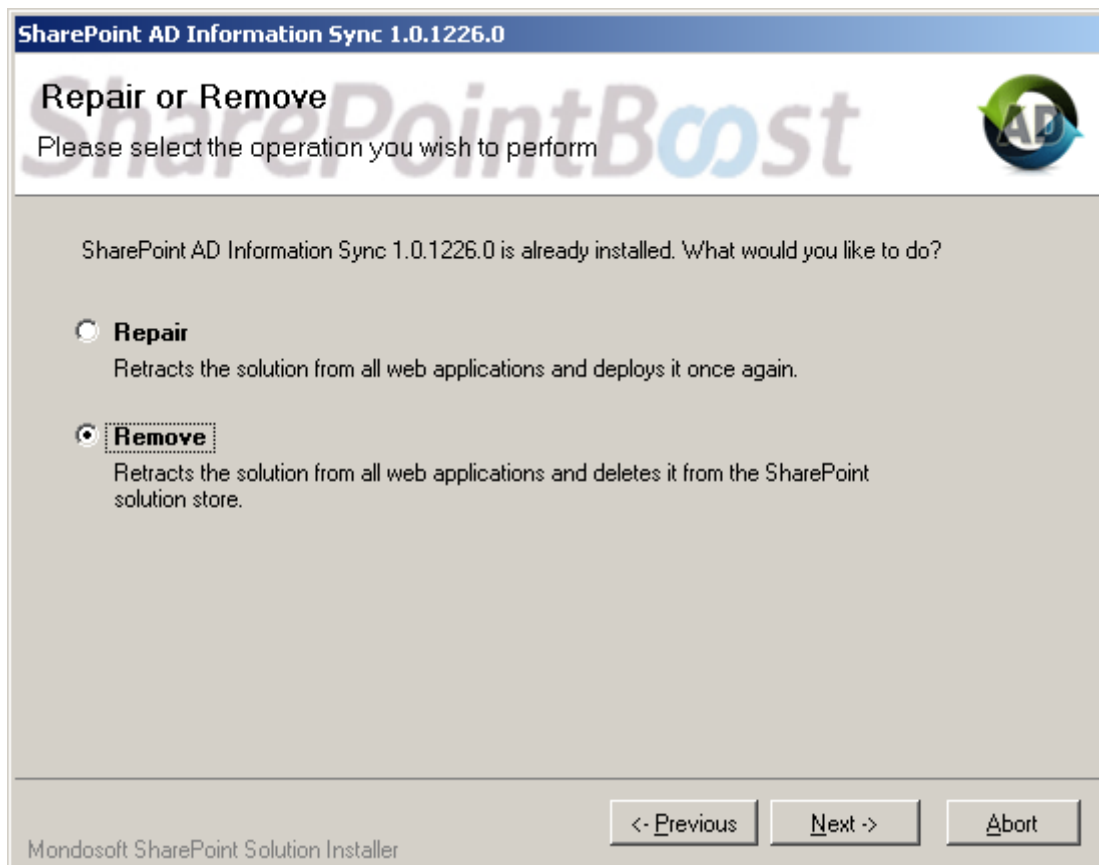
http://192.168.2.112:81/sites/Sharepoint/Testing1-4/
http://192.168.2.112:81/sites/Sharepoint/Testing1-4/m/
12.0.0.4518

Look and Feel	Galleries	Site Administration
<ul style="list-style-type: none">Title, description, and iconTree viewSite themeTop link barQuick LaunchSave site as templateReset to site definition	<ul style="list-style-type: none">Master pagesSite content typesSite columns	<ul style="list-style-type: none">Regional settingsSite libraries and listsSite usage reportsUser alertsRSSSearch visibilitySites and workspacesSite featuresDelete this siteRelated Links scope settingsAD Information Sync settings (Powered by SharePointBoost)

Uninstall

Run the setup.exe again. (If the setup file has been deleted, please download it from <http://www.sharepointboost.com>.)

In the Repair and Remove page, select the Remove radio button and click next, SharePoint AD Information Sync will be uninstalled.



SharePoint AD Information Sync Tutorial

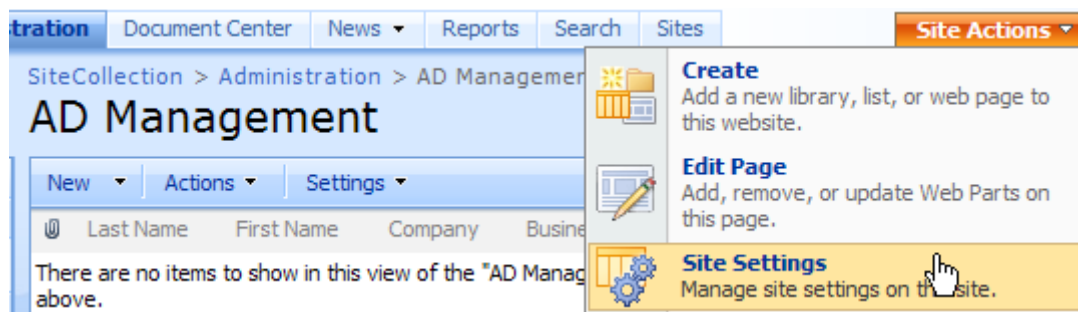
SharePoint AD Information Sync provides a function to sync information from Active Directory to SharePoint lists.

Following is a complete usage guide of SharePoint AD Information Sync.

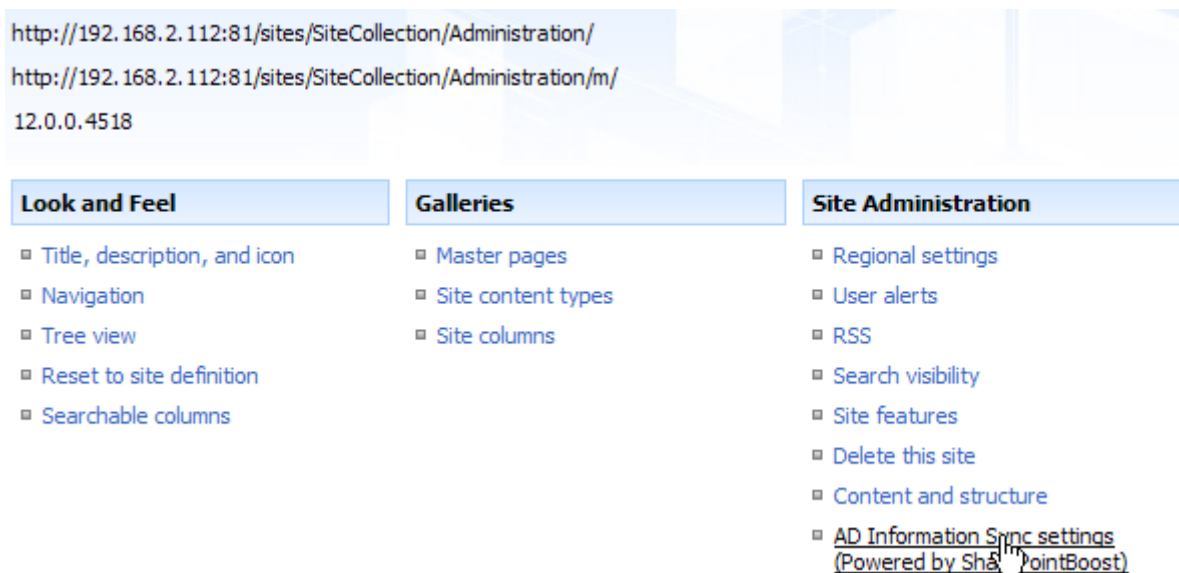
Before configuring AD Information Sync settings, please create contact lists to store the synchronized data.

1. AD Information Sync entrance

Open the site which you want to sync Active Directory Information to. Click Site Settings on Site Actions menu.



Then, click **AD Information Sync Settings** link on the **Site Administration** section in the **Site Settings** page to get into the AD Information Sync Settings page.



2. Profile configuration

On the AD information sync settings page, click **Add Profile**.

AD Information Sync Settings

Configure your active directory synchronization settings.

Sync Profiles

A sync profile stores configuration for synchronization from Active Directory to SharePoint list. The following profiles are currently available in this site.

Profile Name	Active Directory	List	Schedule Type

On the Add Profile page, specify the **Profile Name** and select the list which you want to sync Active Directory information to.

Note: The drop-down list displays all lists in the current site. Here we choose **AD Management** list.

Profile Name Type a name for your profile.	<input type="text" value="OU sync profile"/>
List Select a SharePoint list to sync.	<input type="text" value="AD Management"/>

In the **Active Directory** section, fill in domain name by clicking **Get current domain** button and type the username and password. Then click **Test Connection** button to check whether the current user is connecting with Active Directory.

Note: You can also input server name or IP address of the AD controller into the Domain Server text box manually.

Active Directory

Type a domain server and its login info. Make sure the user have the right to access the domain server.

Domain Server: domain name, server name or ip address	<input type="text" value="bry.com"/>	<input type="button" value="Get current domain"/>
Username: (domain\username)	<input type="text" value="hans"/>	
Password:	<input type="password" value="....."/>	
	<input type="button" value="Test Connection"/>	
Connect Successful.		

In the **Active Directory Info to Sync** section, choose Preset Type first. Second, you can filter information by inputting LDAP query string. Third, you can select **Sync by organizational unit** box and click the organizational units in the OU structure chart of Active Directory.

Note: AD Information Sync support LDAP sentence to set synchronization. If you have no Organizational Units, you can sync the information by default setting or LDAP.

Active Directory Info to Sync

Select a information type to sync. For more accurate filter, you can modify the filter string yourself. Check "Sync by organizational unit" to sync item in specific organizational units.

The screenshot shows the configuration interface for syncing Active Directory information. At the top, there is a "Preset" dropdown menu set to "User". Below it, the "Type" is also "User". The "Filter" field contains the LDAP query: `(&(objectClass=user)(objectCategory=person))`. A checkbox labeled "Sync by organizational unit" is checked. Below this, a tree view shows the organizational structure for "bry.com". The tree includes "Domain Controllers", "SharepointBoost", "Development", "HR", "Market", "Product", and "Testing". Under "Development", there are sub-items "Development-1" and "Development-2". Under "Market", there are sub-items "English", "German", and "Janpanse". All these sub-items have their respective checkboxes checked.

In the **Sync Options** section, click both checkboxes “Create list items when AD items created” and “Deleted list items when AD items deleted”.

Sync Options

Specify whether to create or delete list item during synchronization.

- Create list items when AD items created
- Delete list items when AD items deleted

Pic_10

In the **Column Mapping** section, select the AD fields which you want to sync to the list.

Note: AD Field drop-down list provides about 30 fields of User types and 11 fields of Computer types. What we select now is as following.

The content in brackets of AD Field is the common name of Active directory object. It is used in LDAP sentence.

Column Mapping

Select AD fields to map to SharePoint List Column.

List Column	AD Field
Last Name	Last Name (sn)
First Name	First Name (givenName)
Full Name	Display Name (displayName)
E-mail Address	E-Mail (mail)
Company	Company (company)
Job Title	Title (title)
Business Phone	Telephone Number (telephoneNumber)
Home Phone	Home Phone (homePhone)
Mobile Phone	Mobile Phone (mobile)
Fax Number	Fax (facsimileTelephoneNumber)
Address	Street (streetAddress)
City	City (l)
State/Province	State/Province (st)
ZIP/Postal Code	Zip/Postal Code (postalCode)
Country/Region	Country/Region (co)
Web Page	Web Page (wWWHomePage)
Notes	Notes (info)

In **Sync Schedule** section, specify the schedule type. In this tutorial, we set sync happens between 15:00 and 15:15 daily.

Sync Schedule

A timer job is running in background to check profiles and sync AD information. Set schedule to indicate how often the job should perform for this profile.

Sync manually

Sync every minutes (1-59)

Sync hourly

Sync daily

Between

and

Note: Sync manually means sync the Active Directory information by clicking Sync Now button manually on the sync settings page.

Sync every n minutes means sync the Active Directory information to list every n minutes automatically.

Sync hourly means sync the information from Active Directory to list automatically each hour.

After configuration, click OK.

The following is the synchronization result in the “AD Management” list.

AD Management

New		Actions		View: All contacts				
ID	Last Name	First Name	Full Name	Company	Business Phone	E-mail Address	Fax Number	Job Title
	Abel	Hilda	Hilda Abel	SharepointBoost	019-4644-5122-016	Hilda@bry.com	019-4644-5122-100	Manager
	Brook	Ann	Ann Brook	SharepointBoost	019-4644-5122-007	Ann@bry.com	019-4644-5122-100	Officer
	Brown	Daniel	Daniel Brown	SharepointBoost	019-4644-5122-005	Daniel@bry.com	019-4644-5122-100	Officer
	Burne	Gail	Gail Burne	SharepointBoost	019-4644-5122-014	Gail@bry.com	019-4644-5122-100	HR
	Carter	Brook	Brook Carter	SharepointBoost	019-4644-5122-011	Brook@bry.com	019-4644-5122-100	Developer
	Hark	Besty	Besty Hark	SharepointBoost	019-4644-5122-010	Besty@bry.com	019-4644-5122-100	Developer
	Hill	Cheryl	Cheryl Hill	SharepointBoost	019-4644-5122-012	Cheryl@bry.com	019-4644-5122-100	QA
	Johnson	Hannah	Hannah Johnson	SharepointBoost	019-4644-5122-015	Hannah@bry.com	019-4644-5122-100	Designer
	Lee	Vincent	Vincent Lee	SharepointBoost	019-4644-5122-008	Vincent@bry.com	019-4644-5122-100	Developer
	Longfellow	Eden	Eden Longfellow	SharepointBoost	019-4644-5122-013	Eden@bry.com	019-4644-5122-100	QA
	Miller	Crary	Crary Miller	SharepointBoost	019-4644-5122-006	Crary@bry.com	019-4644-5122-100	Officer
	Rice	Sarah	Sarah Rice	SharepointBoost	019-4644-5122-004	Sarah@bry.com	019-4644-5122-100	Officer
	Smith	James	James Smith	SharepointBoost	019-4644-5122-001	James@bry.com	019-4644-5122-100	Manager
	Williams	Johnan	Johnan Williams	SharepointBoost	019-4644-5122-007	Johnan@bry.com	019-4644-5122-100	Officer
	Wong	Anna	Anna Wong	SharepointBoost	019-4644-5122-009	Anna@bry.com	019-4644-5122-100	Manager

3. LDAP sentence

LDAP is the Lightweight Directory Access Protocol. AD Information Sync access and get the Active Directory information through LDAP protocol.

Suppose that you want to sync a user's information who works for marketing department and his title is manager. You should write the LDAP sentence as following:

Active Directory Info to Sync

Select a information type to sync. For more accurate filter, you can modify the filter string yourself. Check "Sync by organizational unit" to sync item in specific organizational units.

Preset Type: User

Filter: (&(title=manager)(department=market))

Sync by organizational unit

After synchronization, the items displays in the Manager List as following.

Manager List

New		Actions		View: All contacts				
ID	Last Name	First Name	Company	Business Phone	E-mail Address	Job Title	Department	
	Smith	James	SharepointBoost	019-4644-5122-001	James@bry.com	Manager	Market	

4. Items Exclusion

Common name is the unique identifier of the object in Active Directory. AD Information Sync use common name (cn) to exclude items.

The items whose common name listed in the textbox will not be synced to the list.

Suppose that you want to sync the users' information in the organizational unit Development to

Development List, except the items whose common name is Anna Wong.

Configure the profile according to above steps. Then in the **Exclusion Items** section, type Anna Wong in the box.

Exclusion Items

Exclusion items will be skipped during synchronization. Use common name(cn) to represent an item here. For user, common name is user name, and for computer is computer name.

Type each item on a separate line:

Anna Wong

Click OK to save the settings.

And click “Sync Now” on the main settings page. The result is as following and the information of Anna Wong is not added on the list.

Development List

New Actions Settings View: **All contacts**

Last Name	First Name	Company	Business Phone	E-mail Address	Full Name	Web Page
Carter NEW	Brook	SharepointBoost	019-4644-5122-011	Brook@bry.com	Brook Carter	http://www.sharepointboost.Brook-personal.com
Hark NEW	Besty	SharepointBoost	019-4644-5122-010	Besty@bry.com	Besty Hark	http://www.sharepointboost.Besty-personal.com
Lee NEW	Vincent	SharepointBoost	019-4644-5122-008	Vincent@bry.com	Vincent Lee	http://www.sharepointboost.Vincent-personal.com

Active Directory Users and Computer

- Active Directory Users and Computer
 - Saved Queries
 - bry.com
 - Builtin
 - Computers
 - Domain Controllers
 - ForeignSecurityPrincipals
 - SharepointBoost
 - Development
 - Development-1
 - Development-2
 - HR
 - Market
 - Product
 - Testing
 - Users

Development 2 objects

Name	Type	Description
Development-1	Organizational Unit	
Development-2	Organizational Unit	

Development-1 2 objects

Name	Type
Anna Wong	User
Vincent Lee	User

Development-2 2 objects

Name	Type
Besty Hark	User
Brook Carter	User